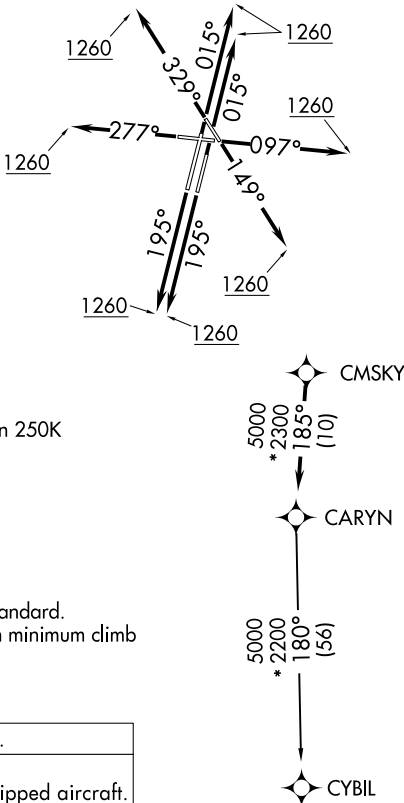


CHICAGO DEP CON
133.5 349.0
ATIS
132.075
GND CON
121.8
DUPAGE TOWER
120.9 257.8

TOP ALTITUDE:
3000



NOTE: Turbojet departures maintain 250K until advised by ATC.

TAKEOFF MINIMUMS:

Rwys 2L/R, 10, 20L/R, 28, 33: Standard.
Rwy 15: 300-1 $\frac{3}{8}$ or standard with minimum climb of 205' per NM to 1000.

RNAV 1 - DME/DME/IRU or GPS.
RADAR required.
RADAR required for non-GPS equipped aircraft.

DEPARTURE ROUTE DESCRIPTION

TAKEOFF RUNWAYS 2L/R: Climb on heading 015° to 1260, then as assigned by ATC, for vectors to CMSKY, thence....
TAKEOFF RUNWAY 10: Climb on heading 097° to 1260, then as assigned by ATC, for vectors to CMSKY, thence....
TAKEOFF RUNWAY 15: Climb on heading 149° to 1260, then as assigned by ATC, for vectors to CMSKY, thence....
TAKEOFF RUNWAYS 20L/R: Climb on heading 195° to 1260, then as assigned by ATC, for vectors to CMSKY, thence....
TAKEOFF RUNWAY 28: Climb on heading 277° to 1260, then as assigned by ATC, for vectors to CMSKY, thence....
TAKEOFF RUNWAY 33: Climb on heading 329° to 1260, then as assigned by ATC, for vectors to CMSKY, thence....
....on track 185° to CARYN, then on (transition), maintain 3000.
Expect filed altitude 10 minutes after departure.

CYBIL TRANSITION (CARYN7.CYBIL):