

|             |          |             |
|-------------|----------|-------------|
| APP CRS     | Rwy Idg  | <b>7000</b> |
| <b>091°</b> | TDZE     | <b>695</b>  |
|             | Apt Elev | <b>703</b>  |

# COPTER RNAV (GPS) RWY 9

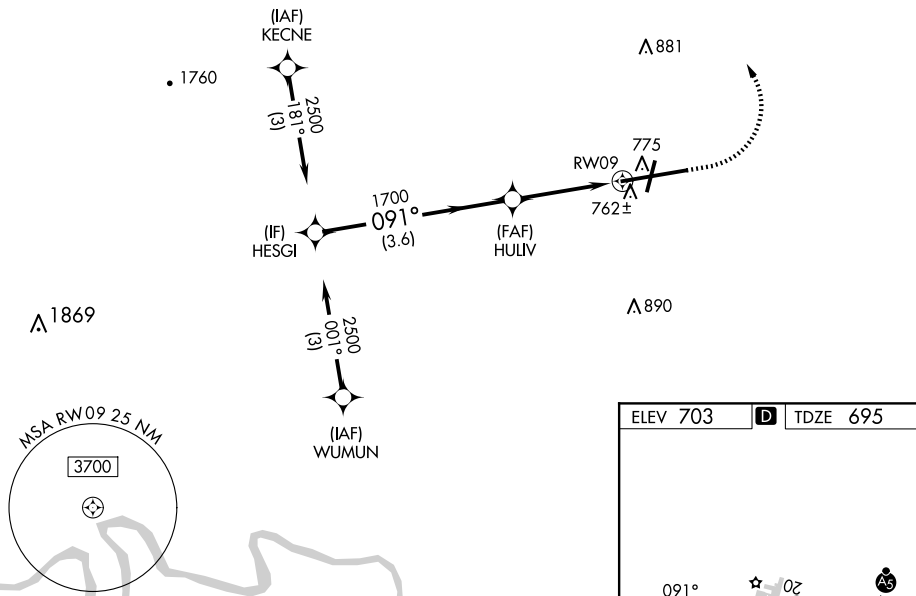
HAGERSTOWN RGNL/RICHARD A HENSON FLD (HGR)

**▼** DME/DME RNP-0.3 NA. VDP NA with Martinsburg altimeter setting. When local altimeter setting not received, use Martinsburg altimeter setting and increase MDA 80 feet.

MISSED APPROACH: Climb to 1200 then climbing left turn to 2500 direct YIYUN and hold.

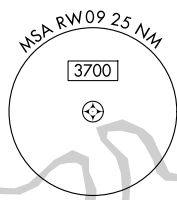
|                        |   |   |                         |                         |
|------------------------|---|---|-------------------------|-------------------------|
| ASOS<br><b>126.375</b> | POTOMAC APP CON<br><b>126.825 239.025</b> | HAGERSTOWN TOWER *<br><b>120.3 (CTAF) 0 225.4</b> | GND CON<br><b>120.8</b> | UNICOM<br><b>122.95</b> |
|------------------------|---|---|-------------------------|-------------------------|

Limit initial and intermediate approach to 90K.  
Limit final and missed approach to 70K.  
Increase to 90K upon reaching the missed approach altitude.



NE-3, 17 APR 2025 to 15 MAY 2025

NE-3, 17 APR 2025 to 15 MAY 2025



|          |          |          |
|----------|----------|----------|
| ELEV 703 | <b>D</b> | TDZE 695 |
|----------|----------|----------|

REIL Rwy 2 and 20  
REIL Rwy 9 **1**  
MIRL Rwy 2-20  
HIRL Rwy 9-27 **1**

|  |                        |              |                  |        |
|--|------------------------|--------------|------------------|--------|
| VGSIs and descent angles not coincident (VGSIs Angle 3.00/TCH 55). |                        | 1200         | 2500             | YIYUN  |
| HESGI  | HULIV                  |              |                  |        |
| 2500   | 1700                   | 4.62° HCH 55 | 0.9 NM to RWY 09 |        |
| 3.6 NM   |                        | 1.1 NM       |                  | 0.9 NM |
| CATEGORY   | COPTER                 |              |                  |        |
| LNAV MDA   | 1020-1/2 325 (400-1/2) |              |                  |        |