

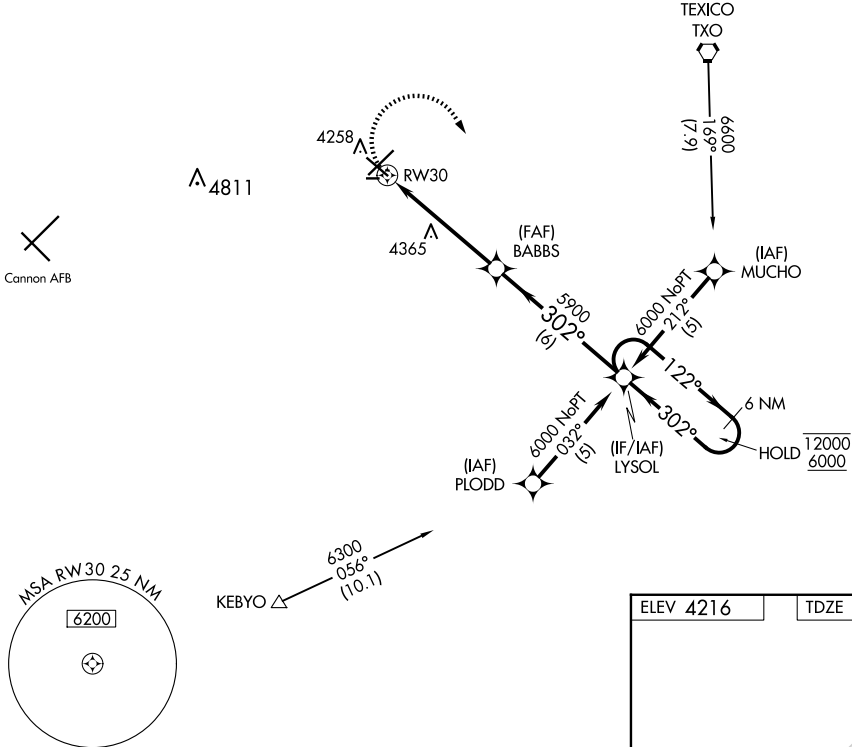
APP CRS	Rwy Idg	5697
302°	TDZE	4202
	Apt Elev	4216

RNAV (GPS) RWY 30

CLOVIS RGNL (CVN)

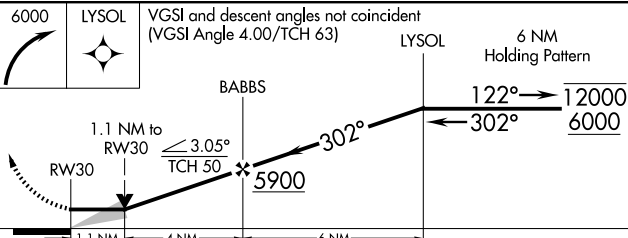
RNP APCH - GPS.		MISSED APPROACH: Climbing right turn to 6000 direct LYSOL and hold.	
CAUTION: Cannon AFB 12 NM WSW, heavy USAF fighter traffic. Circling NA to Rwys 8 and 26.			
AWOS-3PT 135.375	CANNON APP CON 118.425 352.1	CLNC DEL 119.0	UNICOM 122.8 (CTAF) ①

Procedure NA for arrivals at TXO VORTAC via V62 northwest bound.



SW-1, 17 APR 2025 to 15 MAY 2025

SW-1, 17 APR 2025 to 15 MAY 2025



ELEV 4216	TDZE 4202
-----------	-----------

Runway 30 details include:

- Dimensions:** 2442 x 75 feet, Ultralight Rwy.
- Approach Angles:** 0.5% UP, 0.4% UP, 0.5% UP.
- Obstacles:** 4267 ft obstacle near the runway.
- Lighting:** 2442 x 75 Ultralight Rwy.

CATEGORY	A	B	C	D
RNAV MDA	4620-1	418 (500-1)	4620-1¼	418 (500-1¼)
C CIRCLING	4680-1	464 (500-1)	4700-1½	4820-2
			484 (500-1½)	604 (700-2)

REIL Rws 12 and 30 ①
MIRL Rws 4-22 and 12-30 ①