

WAAS CH <b>69222</b> <b>W13A</b>	APP CRS <b>130°</b>	Rwy Idg TDZE Apt Elev	<b>6758</b> <b>1354</b> <b>1354</b>
--	------------------------	-----------------------------	---


# RNAV (GPS) RWY 13

RANGE RGNL (HIB)

RNP APCH - GPS.

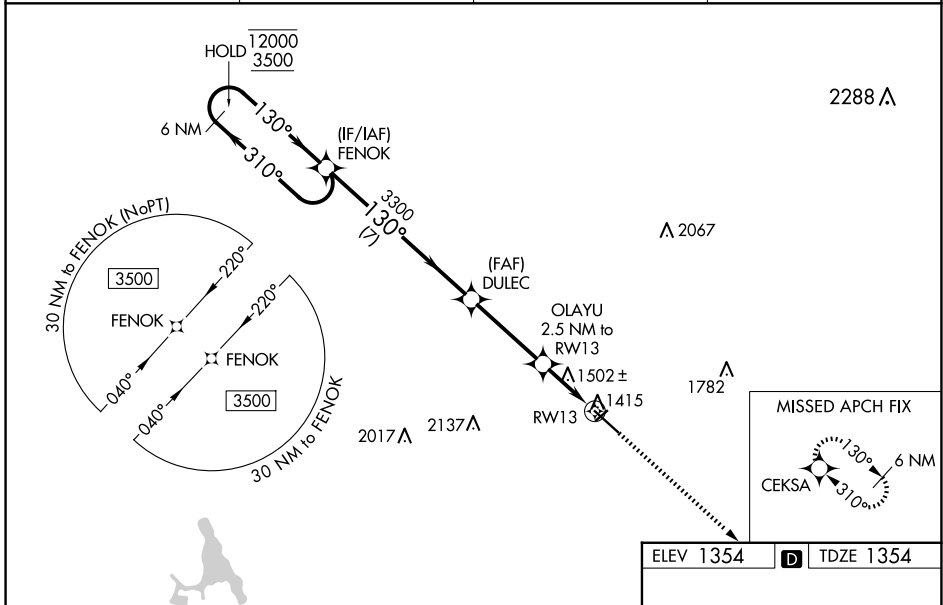
**⚠** Baro-VNAV and VDP NA when using Ezeleth altimeter setting. For uncompensated Baro-VNAV systems, LNAV/VNAV NA below -17°C or above 54°C. When local altimeter setting not received, use Ezeleth altimeter setting and increase LPV DA to 1640 feet; increase LNAV/VNAV DA to 1766 feet and all visibilities 1/8 SM. Increase all MDAs 40 feet and LNAV visibility Cat C/D 1/8 SM, and Circling visibility Cat C 1/4 SM. For inop ALS, increase LNAV/VNAV all Cats visibility to 1 SM. For inop ALS when using Ezeleth altimeter setting, increase LPV all Cats visibility to 7/8 SM, LNAV/VNAV all Cats to 1 1/8 SM, LNAV Cat C/D to 1 3/8 SM.

MALSRL



MISSED APPROACH:  
Climb to 3500 direct  
CEKSA and hold.

ASOS <b>126.425</b>	DULUTH APP CON <b>125.45 233.7</b>	CLNC DEL <b>127.4</b>	UNICOM <b>123.0 (CTAF) 0</b>
------------------------	---------------------------------------	--------------------------	---------------------------------



NC-1, 17 APR 2025 to 15 MAY 2025

NC-1, 17 APR 2025 to 15 MAY 2025

6 NM Holding Pattern		FENOK	DULEC	OLAYU 2.5 NM to RW13	3500 CEKSA
12000 3500		310° 130°	130°	3300	1.2 NM to RW13
GP 3.00° TCH 48				2180	RW13
		7 NM	3.5 NM	1.3 NM	1.2 NM
CATEGORY	A	B	C	D	
LPV DA		1604-1/2	250 (300-1/2)		
LNAV/VNAV DA		1730-5/8	376 (400-5/8)		
LNAV MDA	1800-1/2	446 (500-1/2)	1800-7/8	446 (500-7/8)	
CIRCLING	1900-1	546 (600-1)	1920-1 1/2	1980-2	
			566 (600-1 1/2)	626 (700-2)	

HIRL Rwy 13-31  $\bullet$