

LOC/DME I-FYJ <b>109.55</b> Chan 32 (Y)	APP CRS <b>094°</b>	Rwy Ldg TDZE Apt Elev	<b>5000</b> <b>14</b> <b>20</b>
---	------------------------	-----------------------------	---------------------------------------

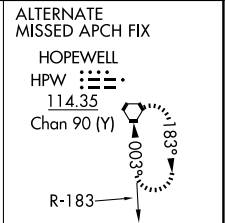
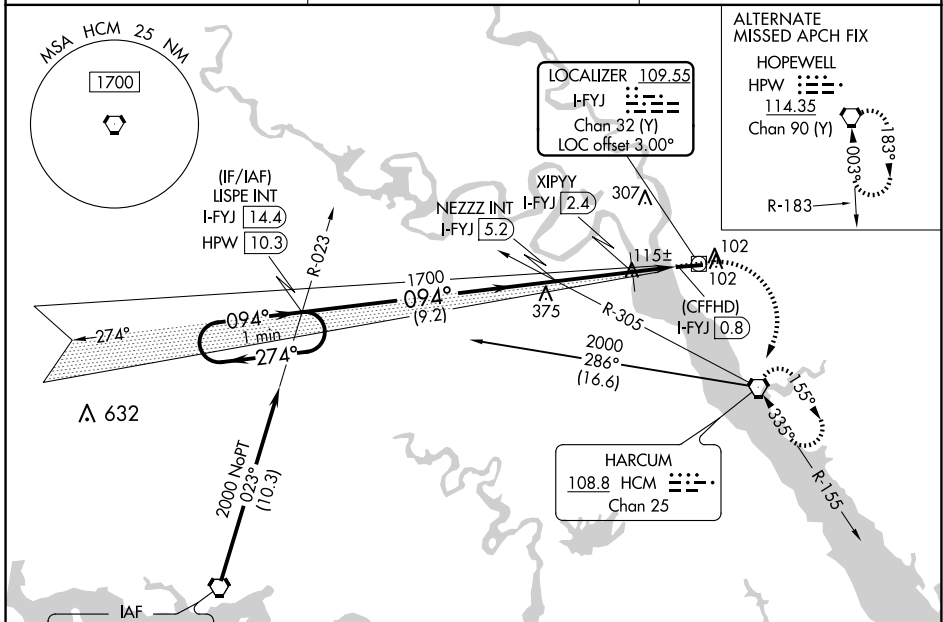
# LOC RWY 10

MIDDLE PENINSULA RGNL (F'YJ)

**NA** When local altimeter setting not received, use Newport News altimeter setting and increase all MDA 80 feet and increase S-10 Cat B and Circling Cat B visibility ¼ SM. VDP NA when using Newport News altimeter setting.

**MISSED APPROACH:** Climb to 500 then climbing right turn to 2000 direct HCM VORTAC and hold, continue climb-in-hold to 2000.

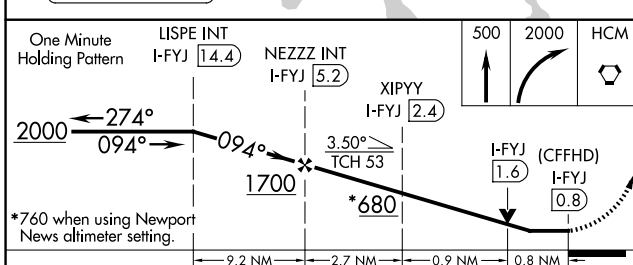
AWOS-3 <b>132.825</b>	POTOMAC APP CON <b>126.4 282.375</b>	UNICOM <b>123.0 (CTAF) 0</b>
--------------------------	---	---------------------------------



NE-3, 17 APR 2025 to 15 MAY 2025

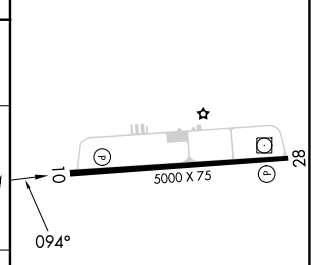
NE-3, 17 APR 2025 to 15 MAY 2025

Procedure NA for arrivals on HPW VORTAC airway radials 323 CW 025.



ELEV 20	TDZE 14
---------	---------

One Minute Holding Pattern	LISPE INT I-FYJ 14.4	NEZZZ INT I-FYJ 5.2	XIPYY I-FYJ 2.4	500	2000	HCM
2000 ← 274°	→ 094°	→ 094°	→ 3.50° TCH 53	↑	↷	◻
← 9.2 NM		← 2.7 NM		← 0.9 NM		← 0.8 NM
CATEGORY	A	B	C	D		
S-10	680-1	666 (700-1)			NA	
CIRCLING	680-1	660 (700-1)			NA	
XIPYY FIX MINIMUMS						
S-10	380-1	366 (400-1)			NA	
CIRCLING	480-1 460 (500-1)	620-1 600 (600-1)			NA	



MIRL Rwy 10-28	REIL Rws 10 and 28
FAF to MAP 4.4 NM	
Knots	60 90 120 150 180
Min:Sec	4:24 2:56 2:12 1:46 1:28