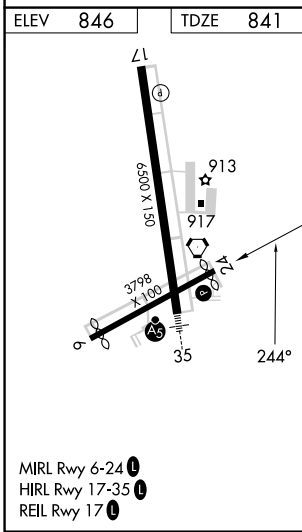
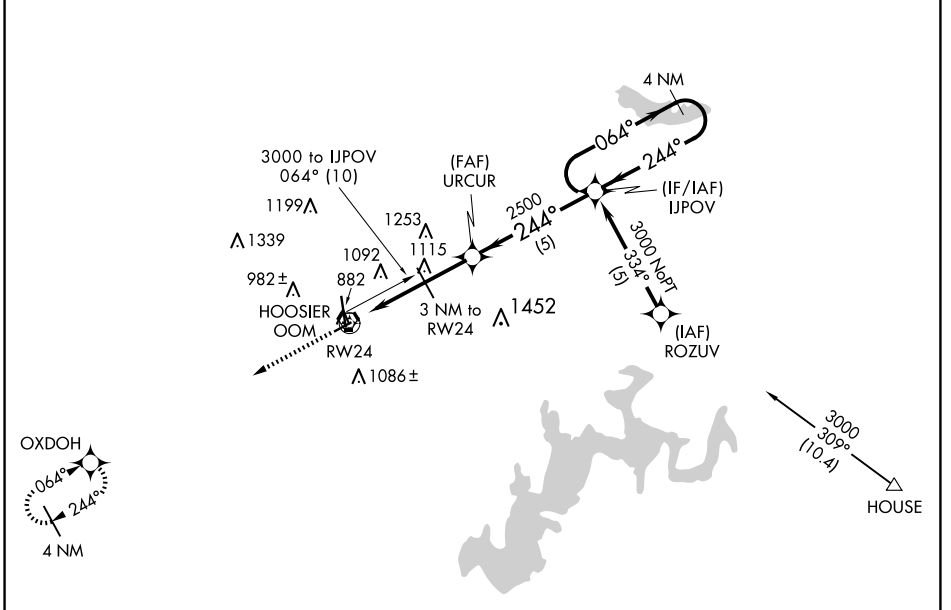


APP CRS <b>244°</b>	Rwy Idg TDZE Apt Elev	<b>3576</b> <b>841</b> <b>846</b>
------------------------	-----------------------------	---

# RNAV (GPS) RWY 24

MONROE COUNTY (BMG)

RNP APCH.		MISSED APPROACH: Climb to 3000 direct OXDOH WP and hold.		
<p>▼ Rwy 24 helicopter visibility reduction below 1 SM NA. Procedure NA at night.</p> <p>▲ When local altimeter setting not received use Terre Haute Rgnl altimeter setting and increase all MDA 140 feet; increase LNAV Cat C/D 1/4 mile.</p>				
ASOS <b>134.525</b>	HULMAN APP CON <b>128.025 339.8</b>	BLOOMINGTON TOWER * <b>120.775 (CTAF) 0</b>	GND CON <b>121.9</b>	UNICOM <b>122.95</b>



3000	OXDOH	VGSI and descent angle not coincident (VGSI Angle 4.00/TCH 51).	IJPOV	4 NM Holding Pattern
↑	☀		URCUR	
			3 NM to RW24	064° → 3000
			RW24	← 244°
			1840 ≤ 3.06° TCH 31	
			2500	
			3 NM	2 NM
			5 NM	
CATEGORY	A	B	C	D
LNAV MDA	1320-1	479 (500-1)	1320-1¼ 479 (500-1¼)	1320-1½ 479 (500-1½)

EC-2, 17 APR 2025 to 15 MAY 2025

EC-2, 17 APR 2025 to 15 MAY 2025