

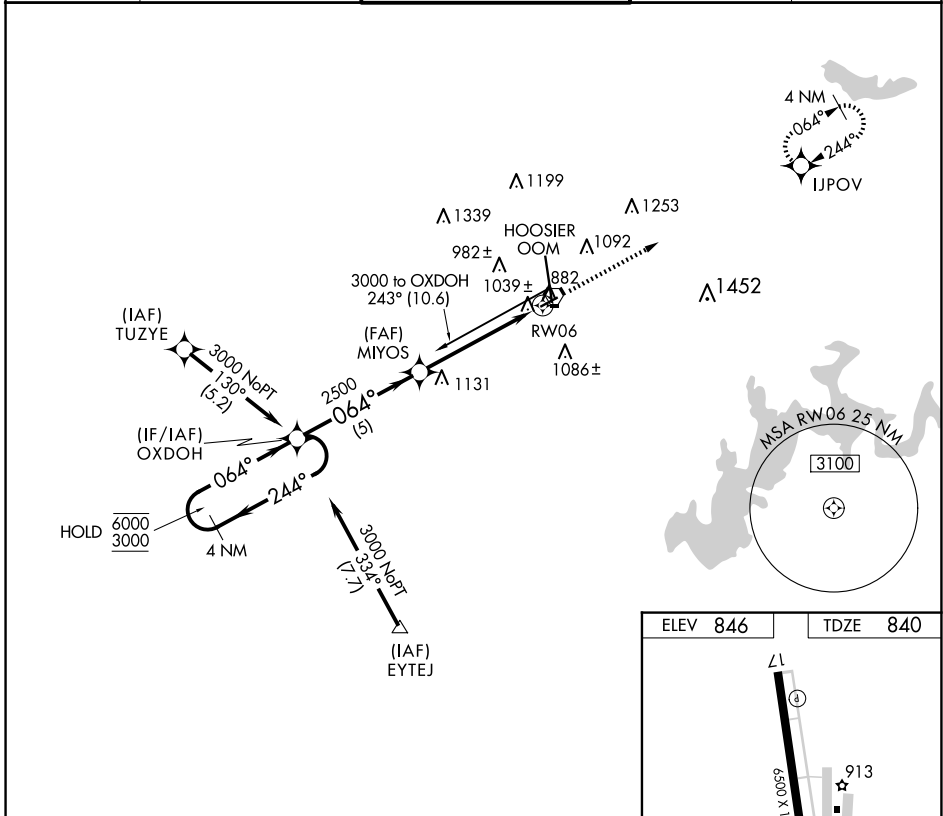
APP CRS	Rwy Idg	<b>3494</b>
<b>064°</b>	TDZE	<b>840</b>
	Apt Elev	<b>846</b>

# RNAV (GPS) RWY 6

MONROE COUNTY (BMG)

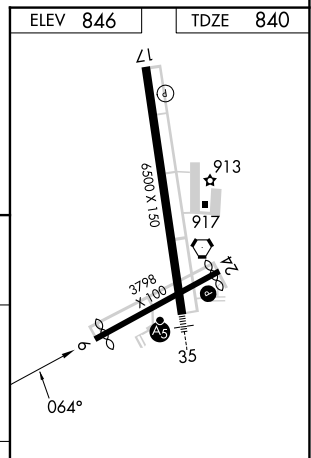
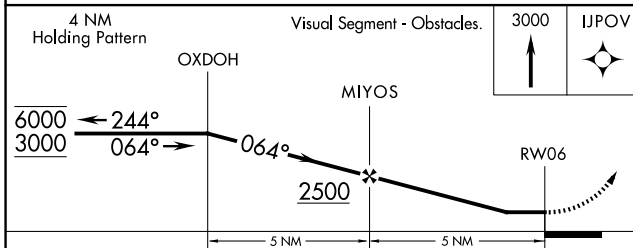
RNP APCH.		MISSED APPROACH: Climb to 3000 direct IJPOV and hold.		
<p>Procedure NA at night. Rwy 6 helicopter visibility reduction below 1 SM NA.</p>				

ASOS <b>134.525</b>	HULMAN APP CON <b>128.025 339.8</b>	BLOOMINGTON TOWER * <b>120.775 (CTAF) 0</b>	GND CON <b>121.9</b>	UNICOM <b>122.95</b>
------------------------	--	--	-------------------------	-------------------------



EC-2, 17 APR 2025 to 15 MAY 2025

EC-2, 17 APR 2025 to 15 MAY 2025



CATEGORY	A	B	C	D
LNVA MDA	1300-1	460 (500-1)	1300-1¼ 460 (500-1¼)	1300-1½ 460 (500-1½)

ELEV 846	TDZE 840
MIRL Rwy 6-24 0	HIRL Rwy 17-35 0
REIL Rwy 17 0	