

BORRN SIX DEPARTURE (RNAV)

SC-5, 17 APR 2025 to 15 MAY 2025

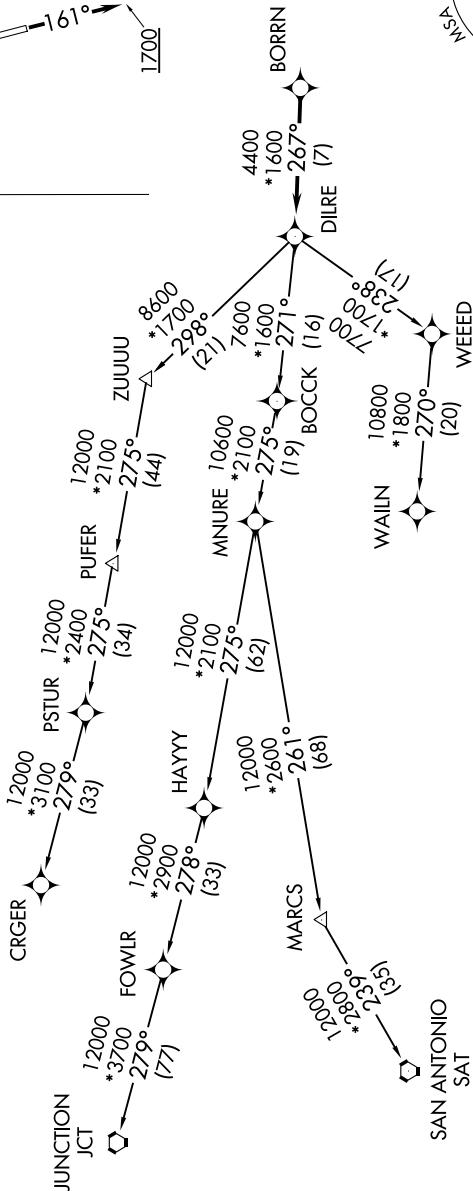
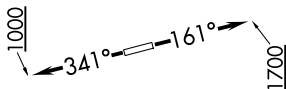
CTAF
122.9
HOUSTON DEP CON
119.7 281.4

TAKEOFF MINIMUMS

Rwys 16, 34: Standard with minimum climb of 500'/NM to 580.

RNAV 1 - DME/DME/IRU or GPS.
RADAR required.

TOP ALTITUDE:
ASSIGNED BY ATC



SAN ANTONIO
SAT

WEEED

WAILN

MARCS

HAYYY

FOWLR

CRGR

JUNCTION
JCT

PSTUR

PUFER

ZUUUU

MNJURE

DIJRE

BORRN

WEEED

WAILN

MARCS

HAYYY

FOWLR

CRGR

JUNCTION
JCT

PSTUR

PUFER

ZUUUU

MNJURE

DIJRE

BORRN

WEEED

WAILN

MARCS

HAYYY

FOWLR

CRGR

JUNCTION
JCT

PSTUR

PUFER

ZUUUU

MNJURE

DIJRE

BORRN

WEEED

WAILN

MARCS

HAYYY

FOWLR

CRGR

JUNCTION
JCT

PSTUR

PUFER

ZUUUU

MNJURE

DIJRE

BORRN

WEEED

WAILN

MARCS

HAYYY

FOWLR

CRGR

JUNCTION
JCT

PSTUR

PUFER

ZUUUU

MNJURE

DIJRE

BORRN

WEEED

WAILN

MARCS

HAYYY

FOWLR

CRGR

JUNCTION
JCT

PSTUR

PUFER

ZUUUU

MNJURE

DIJRE

BORRN

WEEED

WAILN

MARCS

HAYYY

FOWLR

CRGR

JUNCTION
JCT

PSTUR

PUFER

ZUUUU

MNJURE

DIJRE

BORRN

WEEED

WAILN

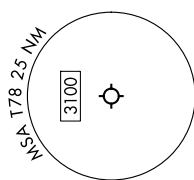
MARCS

HAYYY

FOWLR

CRGR

NOTE: CRGR-TRANSITION ATC assigned only for aircraft departing 54T, AXH, EFD, GLS, HPY, IWS, LBX, LVJ, SGR, TME, T00, T41.



(CONTINUED ON FOLLOWING PAGE)

NOTE: Chart not to scale.

SC-5, 17 APR 2025 to 15 MAY 2025

BORRN SIX DEPARTURE (RNAV)