

# INDIE EIGHT DEPARTURE (RNAV)

CTAF  
122.9  
HOUSTON DEP CON  
119.7 281.4

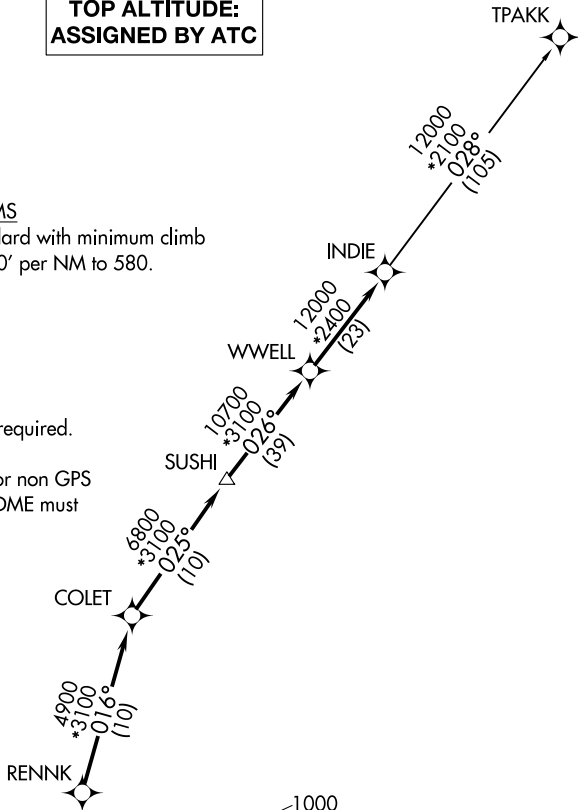
**TOP ALTITUDE:  
ASSIGNED BY ATC**

TPAKK

### TAKEOFF MINIMUMS

Rwys 16, 34: Standard with minimum climb  
of 500' per NM to 580.

- NOTE: RADAR required.
- NOTE: DME/DME/IRU or GPS required.
- NOTE: RNAV 1.
- NOTE: TPAKK TRANSITION: For non GPS  
equipped aircraft TNV DME must  
be operational.



SC-5, 17 APR 2025 to 15 MAY 2025

SC-5, 17 APR 2025 to 15 MAY 2025

### DEPARTURE ROUTE DESCRIPTION

**TAKEOFF RUNWAY 16:** Climb on heading 161° to 1700 for RADAR vectors to RENNK, thence . . . .

**TAKEOFF RUNWAY 34:** Climb on heading 341° to 1000 for RADAR vectors to RENNK, thence . . . .

. . . . on track 016° to COLET, then on track 025° to SUSHI, then on track 026° to WWELL, then on track 026° to INDIE, then on (transition). Maintain ATC assigned altitude. Expect filed altitude 10 minutes after departure.



TPAKK TRANSITION (INDIE8.TPAKK)

NOTE: Chart not to scale.