

APP CRS	Rwy Idg	<b>4855</b>
<b>179°</b>	TDZE	<b>912</b>
	Apt Elev	<b>912</b>

# RNAV (GPS) RWY 18

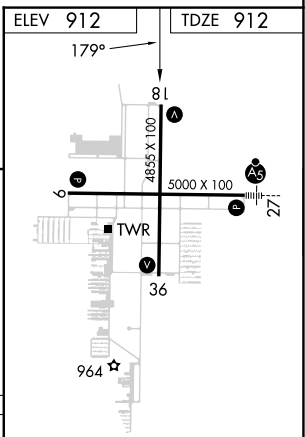
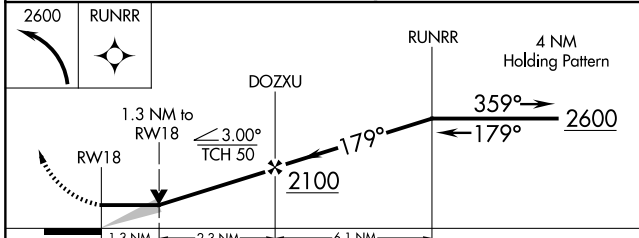
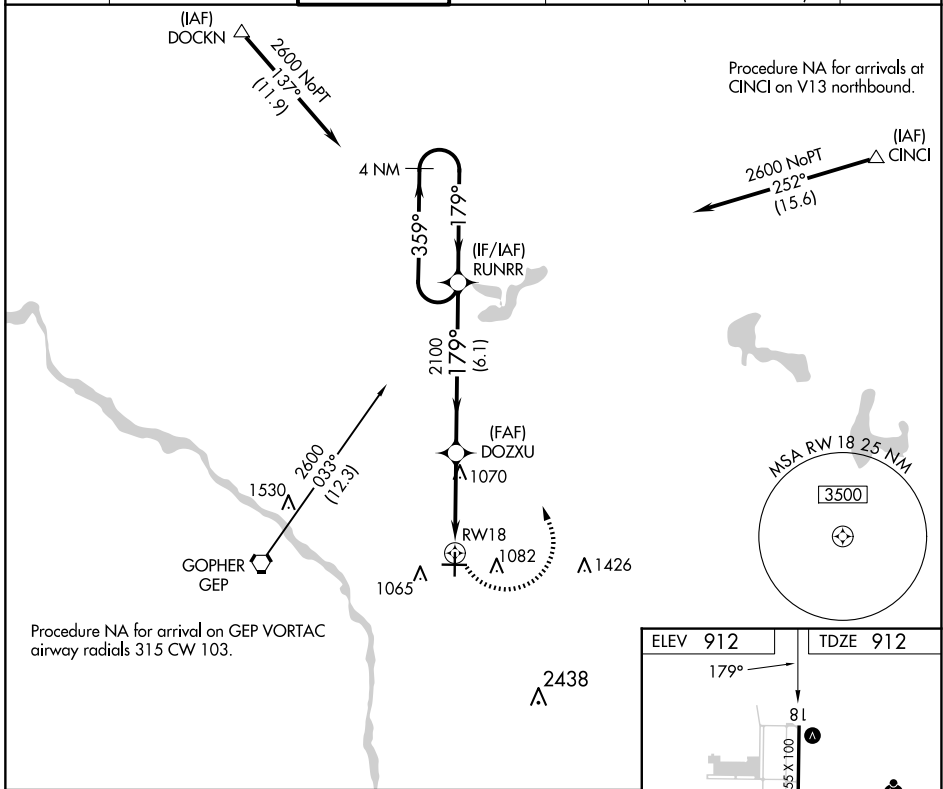
ANOKA COUNTY/BLAINE (JANES FLD) (A.N.E.)

RNP APCH - GPS.

⚠ When local altimeter setting not received, use Crystal altimeter setting and increase all MDA 40 feet and Circling Cat D visibility  $\frac{1}{4}$  SM. VDP NA when using Crystal altimeter setting.

MISSED APPROACH: Climbing left turn to 2600 direct RUNRR and hold.

ATIS	MINNEAPOLIS APP CON	ANOKA TOWER*	GND CON	CLNC DEL	CLNC DEL	UNICOM
<b>120.625</b>	<b>126.5 335.65</b>	<b>132.4 (CTAF)</b>	<b>121.85</b>	<b>121.3</b>	<b>121.85</b> (When twr closed)	<b>122.95</b>



CATEGORY	A	B	C	D
LNNAV MDA	1380-1 468 (500-1)		1380-1 $\frac{3}{8}$ 468 (500-1 $\frac{3}{8}$ )	
CIRCLING	1400-1 488 (500-1)		1460-1 $\frac{1}{2}$ 548 (600-1 $\frac{1}{2}$ )	1580-2 668 (700-2)

HIRL Rwy 9-27

MIRL Rwy 18-36

REIL Rws 9, 18 and 36

NC-1, 17 APR 2025 to 15 MAY 2025

NC-1, 17 APR 2025 to 15 MAY 2025