

(RST1.RST) 23334

# ROCHESTER ONE DEPARTURE

ANOKA COUNTY/BLAINE (JANES FLD) (A.N.E.)

AL-5202 (FAA)

MINNEAPOLIS, MINNESOTA

MINNEAPOLIS DEP CON

126.5 335.65

ATIS

120.625

CLNC DEL

121.3

CLNC DEL

121.85 (when twr closed)

ANOKA TOWER\*

132.4



**TOP ALTITUDE:**  
**(JETS) 7000/**  
**(PROPS) 5000**

### TAKEOFF MINIMUMS

Rwy 9: Standard with minimum climb of 341' per NM to 3000.

Rwy 18: Standard with minimum climb of 371' per NM to 3000.

Rwy 27: Standard with minimum climb of 260' per NM to 2800.

Rwy 36: Standard with minimum climb of 259' per NM to 2800.

FLYING CLOUD  
117.7 FCM   
Chan 124

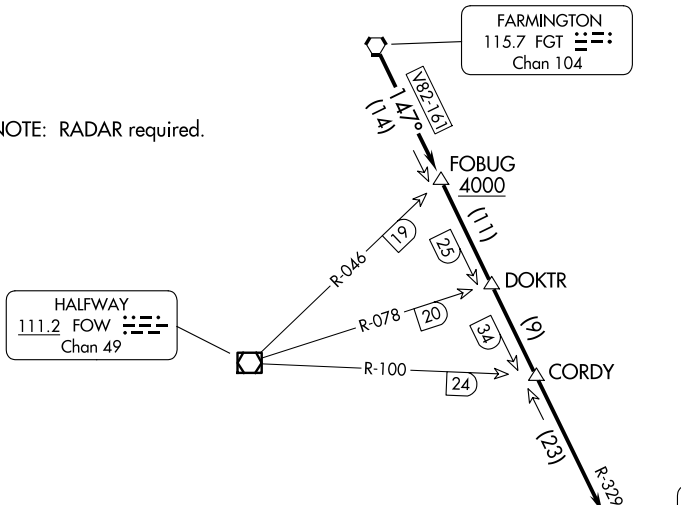
FARMINGTON  
115.7 FGT   
Chan 104

HALFWAY  
111.2 FOW   
Chan 49

ROCHESTER  
112.0 RST   
Chan 57

WATERLOO  
112.2 ALO   
Chan 59

NOTE: RADAR required.



### DEPARTURE ROUTE DESCRIPTION

**TAKEOFF ALL RUNWAYS:** Fly assigned heading and altitude for RADAR vectors to FGT VORTAC then on FGT R-147 and RST R-329 to RST VOR/DME. Cross FOCUS INT/FGT 14 DME at or above 4000, thence . . . .

. . . . on assigned transition or assigned route. Expect clearance to filed altitude/flight level 10 (ten) minutes after departure.

**WATERLOO TRANSITION (RST1.ALO):** From over RST VOR/DME on RST R-168 and ALO R-353 to ALO VOR/DME.

NOTE: Chart not to scale.

# ROCHESTER ONE DEPARTURE

(RST1.RST) 13SEP18

MINNEAPOLIS, MINNESOTA

ANOKA COUNTY/BLAINE (JANES FLD) (A.N.E.)

NC-1, 17 APR 2025 to 15 MAY 2025

NC-1, 17 APR 2025 to 15 MAY 2025