

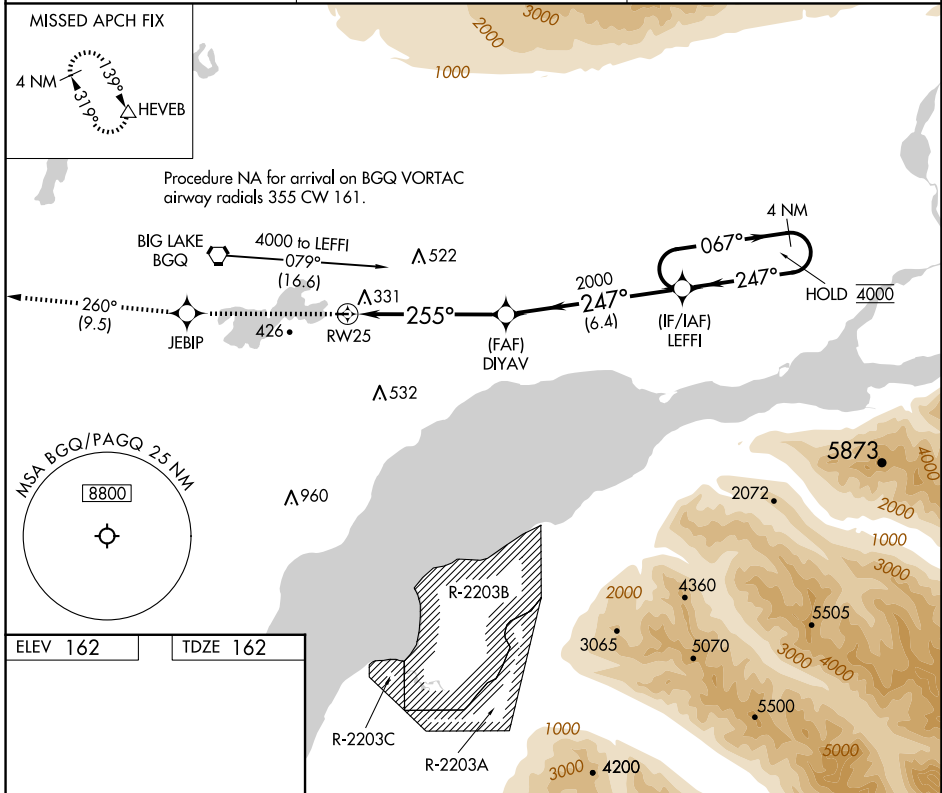
APP CRS	Rwy Idg	2450
255°	TDZE	162
	Apt Elev	162

RNAV (GPS) RWY 25

BIG LAKE (BGQ) (PAGQ)

RNP APCH.	MISSED APPROACH: Climb to 3000 direct JEBIP and on track 260° to HEVEB and hold.
<p>Procedure NA at night. Rwy 25 helicopter visibility reduction below 1 SM NA. Use Anchorage altimeter setting.</p>	

ANC ASOS 135.5	ANCHORAGE APP CON 118.6	CTAF 122.80
--------------------------	-----------------------------------	-----------------------



ELEV 162	TDZE 162
----------	----------

MIRL Rwy 7-25

3000	JEBIP	HEVEB	LEFFI	
↑	tr 260°	△	4 NM Holding Pattern	
	DIYAV		4000	
	RW25	2000		
	3.00° TCH 40			
	5.7 NM	6.4 NM		
CATEGORY	A	B	C	D
LNAV MDA	1020-1 858 (900-1)	1020-1¼ 858 (900-1¼)	1020-2½ 858 (900-2½)	NA
CIRCLING	1020-1¼ 858 (900-1¼)		1020-2½ 858 (900-2½)	NA

AK, 17 APR 2025 to 12 JUN 2025

AK, 17 APR 2025 to 12 JUN 2025