

VORTAC BGQ <b>112.5</b> Chan 72	APP CRS <b>096°</b>	Rwy Idg TDZE Apt Elev	<b>2450</b> <b>162</b> <b>162</b>
---------------------------------------	------------------------	-----------------------------	---

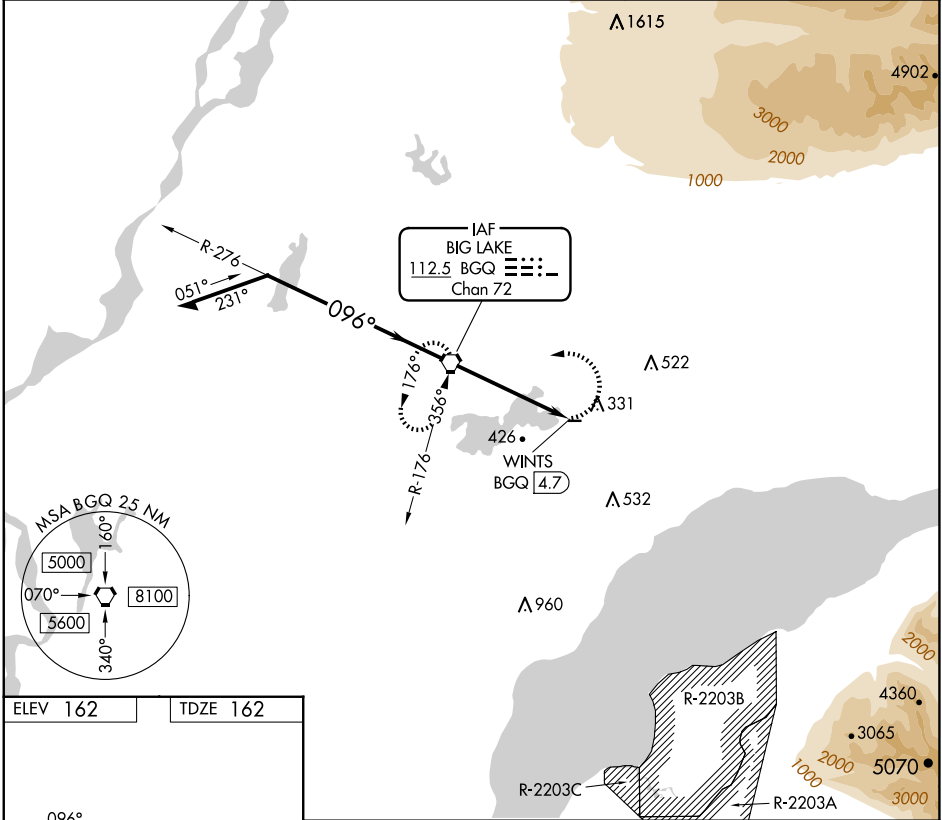
**VOR RWY 7**  
BIG LAKE (BGQ) (PAGQ)



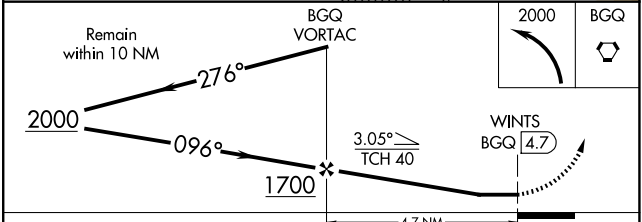
Procedure NA at night. Rwy 7 helicopter visibility reduction below 1 SM NA. Use Anchorage altimeter setting.

MISSED APPROACH: Climbing left turn to 2000 direct BGQ VORTAC and hold, climb-in-hold to 2000.

ANC ASOS <b>135.5</b>	ANCHORAGE APP CON <b>118.6</b>	CTAF <b>122.8</b>
--------------------------	-----------------------------------	----------------------



ELEV 162	TDZE 162
----------	----------



MIRL Rwy 7-25	FAF to MAP 4.7 NM				
Knots	60	90	120	150	180
Min:Sec	4:42	3:08	2:21	1:53	1:34
<input checked="" type="checkbox"/> CIRCLING	980-1 818 (900-1)	980-1 818 (900-1)	980-2 818 (900-2)	980-2 818 (900-2)	NA

AK, 17 APR 2025 to 12 JUN 2025

AK, 17 APR 2025 to 12 JUN 2025