

(JDUBB4.JDUBB) 23026

# JDUBB FOUR DEPARTURE (RNAV)

AL-5251 (FAA)

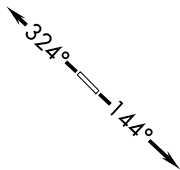
WINCHESTER RGNL (OKV)  
WINCHESTER, VIRGINIA

POTOMAC DEP CON  
120.45 306.925  
AWOS-3  
124.85  
CLNC DEL  
126.15  
UNICOM  
122.975 (CTAF)

**TOP ALTITUDE:  
3000**

### TAKEOFF MINIMUMS

Rwy 14: Standard  
Rwy 32: Standard with minimum climb  
of 240' per NM to 1900.



### DEPARTURE ROUTE DESCRIPTION

TAKEOFF RUNWAY 14: Climb on heading 144° or as assigned by ATC.  
Expect RADAR vectors to HAFNR, then on track 225° to JDUBB, thence. . . .

TAKEOFF RUNWAY 32: Climb on heading 324° or as assigned by ATC.  
Expect RADAR vectors to HAFNR, then on track 225° to JDUBB, thence. . . .

. . . . on assigned transition. Maintain 3000. Expect clearance  
to filed altitude within ten (10) minutes after departure.

MELTN TRANSITION (JDUBB4.MELTN)

RRSIN TRANSITION (JDUBB4.RRSIN)

P-56B

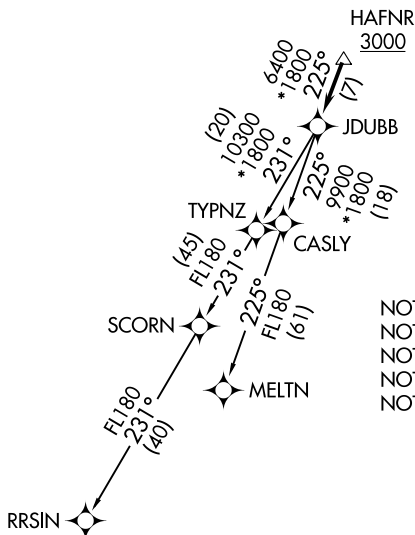


P-56A



NE-3, 17 APR 2025 to 15 MAY 2025

NE-3, 17 APR 2025 to 15 MAY 2025



- NOTE: RNAV 1.
- NOTE: RADAR required.
- NOTE: DME/DME/IRU or GPS required.
- NOTE: Turbo-jets only.
- NOTE: Takeoff Rwy 32 requires a climb to 2500 on heading 341° before proceeding on the ATC assigned heading for obstacle avoidance.

NOTE: Chart not to scale.

# JDUBB FOUR DEPARTURE (RNAV)

(JDUBB4.JDUBB) 31DEC20

WINCHESTER, VIRGINIA  
WINCHESTER RGNL (OKV)