

WAAS CH <b>70712</b> <b>W14A</b>	APP CRS <b>144°</b>	Rwy Idg TDZE Apt Elev	<b>5498</b> <b>726</b> <b>726</b>
--	------------------------	-----------------------------	---

# RNAV (GPS) RWY 14

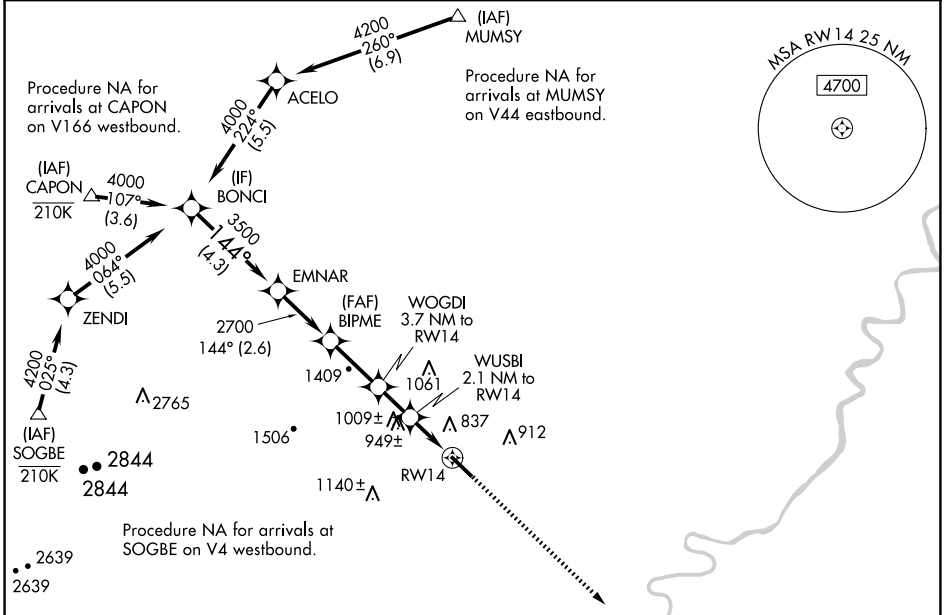
WINCHESTER RGNL (OKV)

RNP APCH - GPS.

**⚠** Rwy 14 helicopter visibility reduction below 3/4 SM NA. For uncompensated Baro-VNAV systems, LNAV/VNAV NA below -16°C or above 54°C.

MISSED APPROACH:  
Climb to 3700 direct CLADD and hold, continue climb-in-hold to 3700.

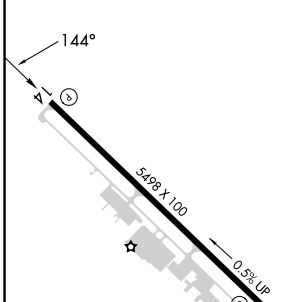
AWOS-3 <b>124.85</b>	POTOMAC APP CON <b>120.45 306.925</b>	CLNC DEL <b>126.15</b>	UNICOM <b>122.975 (CTAF)</b>
-------------------------	--	---------------------------	---------------------------------



NE-3, 17 APR 2025 to 15 MAY 2025

NE-3, 17 APR 2025 to 15 MAY 2025

ELEV 726	TDZE 726
----------	----------



REIL Rwy 14 <b>Ⓛ</b>	HIRL Rwy 14-32 <b>Ⓛ</b>
----------------------	-------------------------

	BONCI	EMNAR	BIPME	WOGDI	WUSBI	3700	CLADD
	4000	3500	2700	1940	1440	↑	⊛
	144°						
	GP 3.00°						
	TCH 45						
	4.3 NM		2.6 NM	2.4 NM	1.6 NM	0.6 NM	1.5 NM
CATEGORY	A		B		C		D
LPV DA			976-3/4		250 (300-3/4)		
LNAV/VNAV DA			1040-7/8		314 (400-7/8)		
LNAV MDA	1200-1		474 (500-1)		1200-1 3/8		474 (500-1 3/8)
<b>Ⓛ</b> CIRCLING	1200-1		1220-1		1380-1 3/4		1500-2 1/2
	474 (500-1)		494 (500-1)		654 (700-1 3/4)		774 (800-2 1/2)