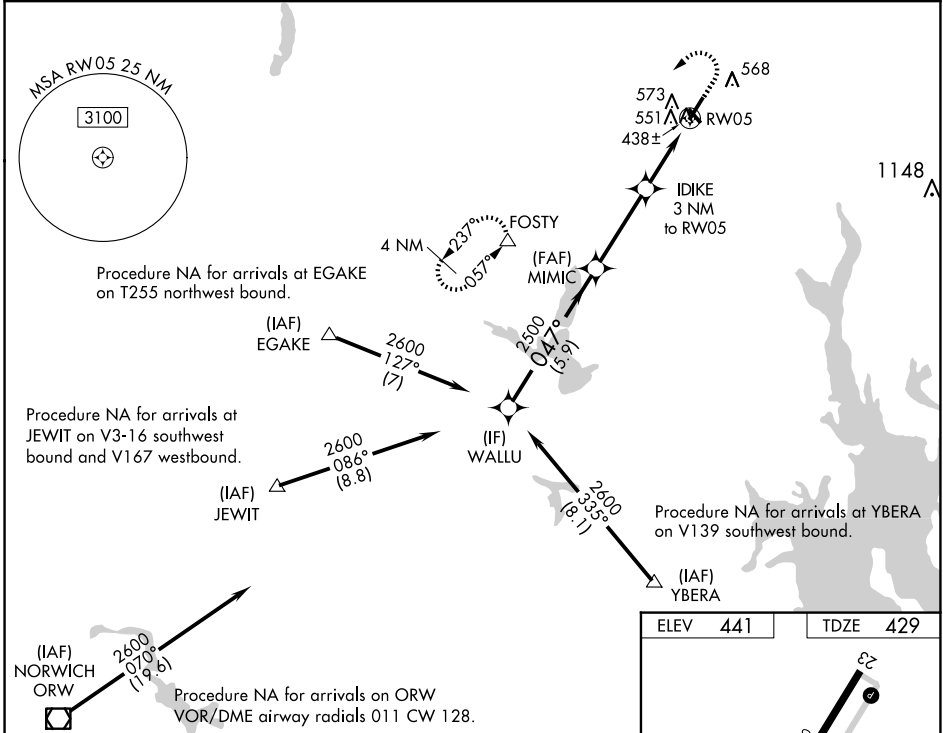


WAAS CH 50231 W05A	APP CRS 047°	Rwy Idg TDZE 429 Apt Elev 441	5000
--	------------------------	---	-------------

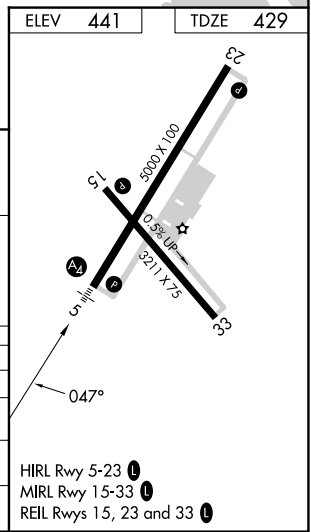
RNAV (GPS) RWY 5

NORTH CENTRAL STATE (SFZ)

RNP APCH - GPS.		MALS	MISSED APPROACH: Climb to 2000 then climbing left turn to 2500 direct FOSTY and hold.
<p>⚠ Circling Rwy 15, 33 NA at night. For inoperative MALS, increase LPV all Cats visibility to 3/8 mile. For inop ALS, increase LPV all Cats visibility to 3/8 SM and LNAV/VNAV all Cats visibility to 1 1/8 SM. For uncompensated Baro-VNAV systems, LNAV/VNAV NA below -15°C or above 54°C.</p>			
AWOS-3PT 120.775	PROVIDENCE APP CON * 123.675 244.875	CLNC DEL 124.35	UNICOM 123.075 (CTAF) 0



WALLU		MIMIC		IDIKE		RW05		FOSTY		
2600		2500		2500		2500		2000		
GP 3.00°		*1420		1.1 NM to RW05		1.1 NM to RW05		1.1 NM to RW05		
TCH 52		5.9 NM		3.4 NM		1.9 NM		1.1		
CATEGORY	A	B	C	D						
LPV DA	700-3/4		271 (300-3/4)		NA					
LNAV/VNAV DA	835-1		406 (400-1)		NA					
LNAV MDA	820-3/4		391 (400-3/4)		820-7/8		391 (400-7/8)		NA	
CIRCLING	900-1		459 (500-1)		900-1 1/2		459 (500-1 1/2)		NA	



NE-1, 17 APR 2025 to 15 MAY 2025

NE-1, 17 APR 2025 to 15 MAY 2025