

LOC/DME I-GWB <b>108.75</b> Chan <b>24(Y)</b>	APP CRS <b>274°</b>	Rwy Idg <b>6356</b> TDZE <b>881</b> Apt Elev <b>881</b>
---	------------------------	---

# ILS or LOC RWY 27

DE KALB COUNTY (GWB)

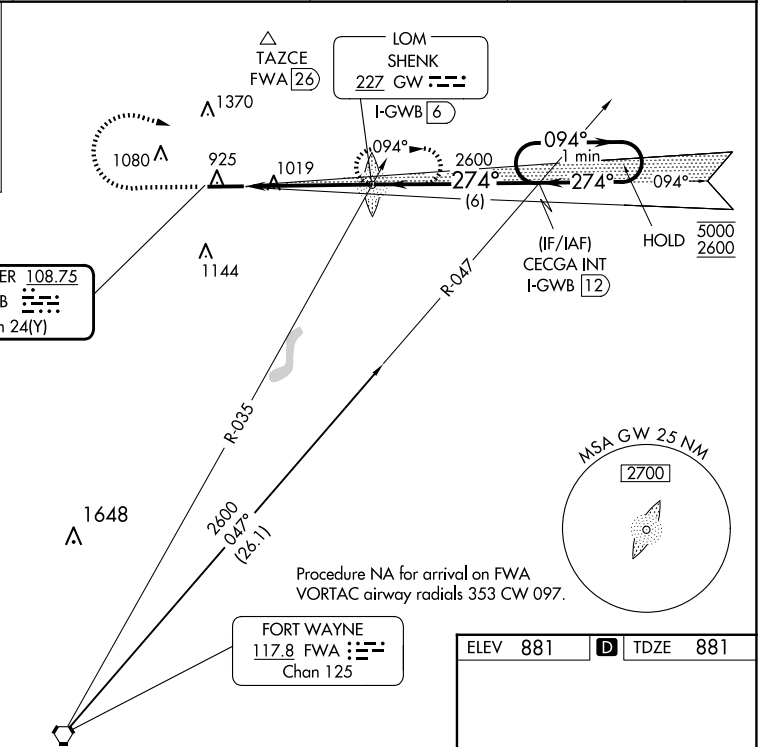
NA NA	MALSR 	MISSED APPROACH: Climb to 2000 then climbing right turn to 2600 direct SHENK LOM/INT/ I-GWB 6 DME and hold.
----------	-----------	---

AWOS-3P <b>124.15</b>	FORT WAYNE APP CON <b>127.2 284.6</b>	CLNC DEL <b>126.6</b>	UNICOM <b>123.0 (CTAF) 0</b>
--------------------------	--	--------------------------	---------------------------------

ALTERNATE MISSED APCH FIX

117.8 FWA  
Chan 125

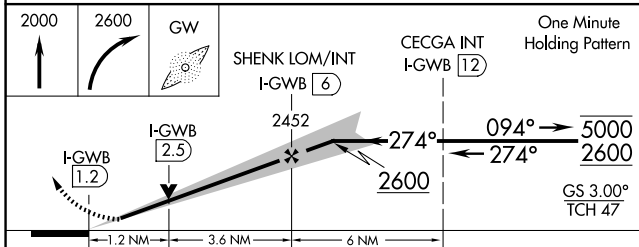
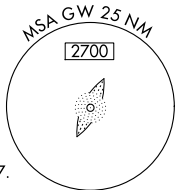
TAZCE FWA [26]



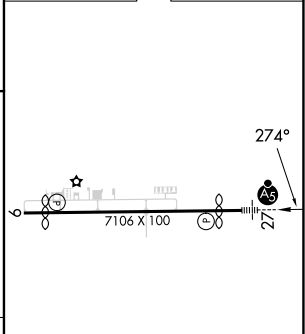
LOCALIZER **108.75**  
I-GWB  
Chan **24(Y)**

FORT WAYNE  
117.8 FWA  
Chan 125

Procedure NA for arrival on FWA  
VORTAC airway radials 353 CW 097.



ELEV <b>881</b>	<b>D</b> TDZE <b>881</b>
-----------------	--------------------------



CATEGORY	A	B	C	D
S-ILS 27	1081-1/2		200 (200-1/2)	
S-LOC 27	1320-1/2 439 (500-1/2)		1320-3/4 439 (500-3/4)	
<b>C</b> CIRCLING	1320-1 439 (500-1)	1560-1 679 (700-1)	1720-2 1/2 839 (900-2 1/2)	1720-2 3/4 839 (900-2 3/4)

REIL Rwys 9 and 27 <b>0</b>	MIRL Rwy 9-27 <b>0</b>				
FAF to MAP 4.8 NM					
Knots	60	90	120	150	180
Min:Sec	4:48	3:12	2:24	1:55	1:36

EC-2, 17 APR 2025 to 15 MAY 2025

EC-2, 17 APR 2025 to 15 MAY 2025