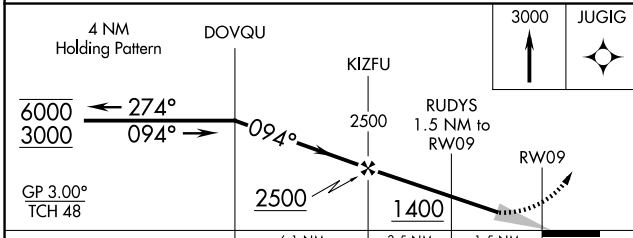
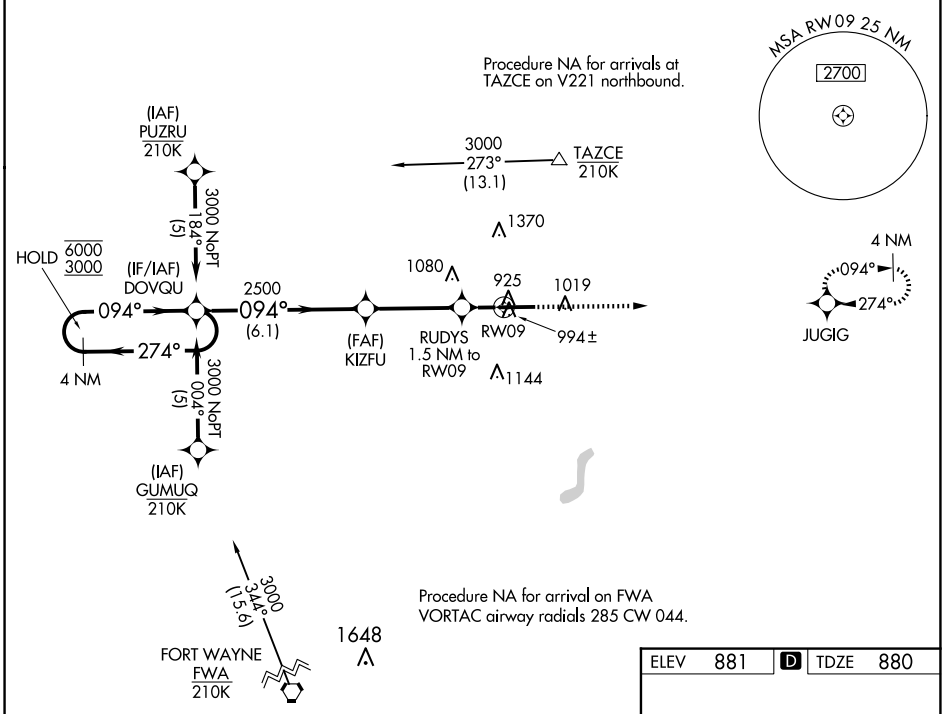


WAAS CH 40201 W09A	APP CRS 094°	Rwy Idg 6406 TDZE 880 Apt Elev 881
--	------------------------	---

RNAV (GPS) RWY 9

DE KALB COUNTY (GWB)

RNP APCH - GPS.		MISSED APPROACH: Climb to 3000 direct JUGIG and hold.	
AWOS-3P 124.15	FORT WAYNE APP CON 127.2 284.6	CLNC DEL 126.6	UNICOM 123.0 (CTAF) 0



CATEGORY	A	B	C	D
LPV DA		1130-3/4	250 (300-3/4)	
LNAV/VNAV DA		1155-7/8	275 (300-7/8)	
LNAV MDA		1260-1	380 (400-1)	
CIRCLING	1320-1 439 (500-1)	1560-1 679 (700-1)	1720-2 1/2 839 (900-2 1/2)	1720-2 3/4 839 (900-2 3/4)

ELEV 881	D TDZE 880
----------	-------------------

REIL Rwy 9 and 27 0

MIRL Rwy 9-27 0

EC-2, 17 APR 2025 to 15 MAY 2025

EC-2, 17 APR 2025 to 15 MAY 2025