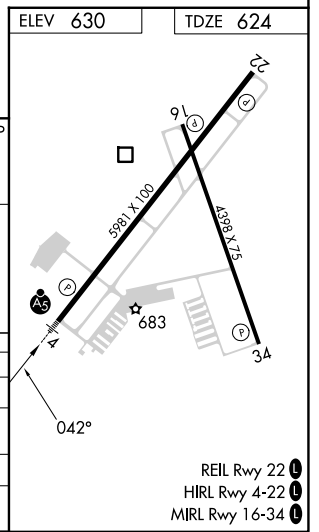
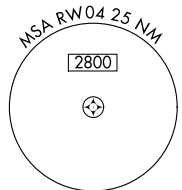
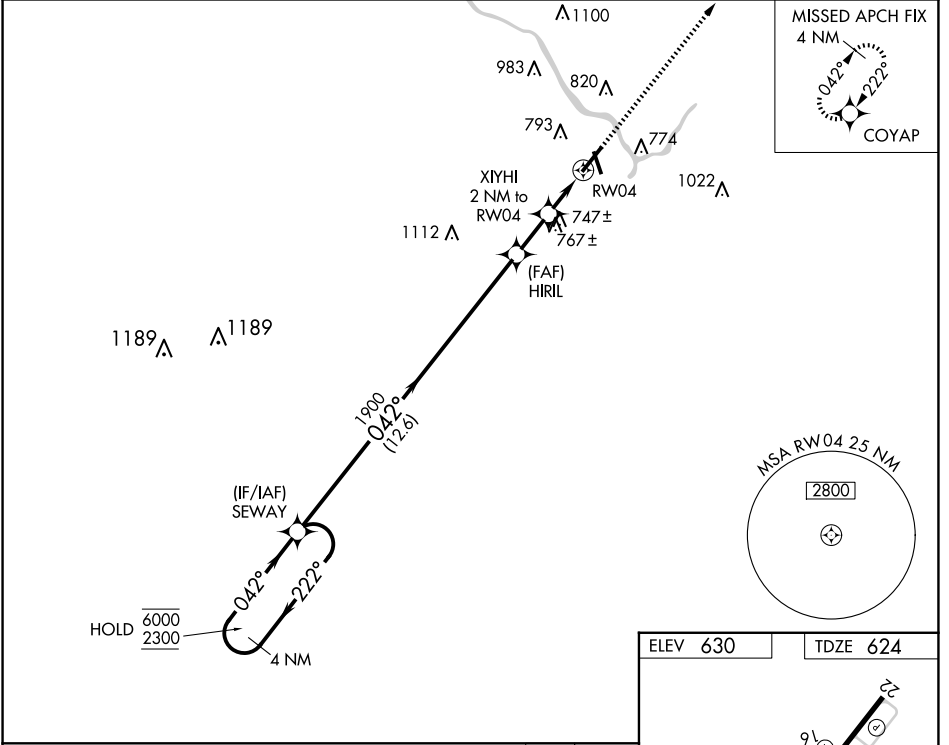


WAAS CH <b>42799</b> <b>W04A</b>	APP CRS <b>042°</b>	Rwy Idg TDZE Apt Elev	<b>5981</b> <b>624</b> <b>630</b>
--	------------------------	-----------------------------	---

# RNAV (GPS) RWY 4

GREATER KANKAKEE (IKK)

RNP APCH - GPS.		MALSR	MISSED APPROACH: Climb to 2300 direct COYAP and hold.
<p><b>▽</b> Circling Rwy 16, 34 NA at night. For uncompensated Baro-VNAV systems, LNAV/VNAV NA below -16°C or above 54°C. For inop ALS, increase LNAV Cats C/D to 1 SM.</p> <p><b>▲</b></p>			
AWOS-3 <b>128.475</b>	CHICAGO CENTER <b>132.5 284.7</b>	UNICOM <b>123.0 (CTAF) 0</b>	



4 NM Holding Pattern	SEWAY	HIRL	XIYHI 2 NM to RW04	1 NM to RW04	RW04
6000 ← 222°	2300 → 042°	1900	1300		
GP 3.00° TCH 51					
	12.6 NM	1.9 NM	1 NM	1 NM	
CATEGORY	A	B	C	D	
LPV DA		824-1/2	200 (200-1/2)		
LNAV/VNAV DA		1010-5/8	386 (400-5/8)		
LNAV MDA	1000-1/2	376 (400-1/2)	1000-5/8	376 (400-5/8)	
<b>C</b> CIRCLING	1080-1 450 (500-1)	1100-1 470 (500-1)	1140-1 1/2 510 (600-1 1/2)	1340-2 1/4 710 (800-2 1/4)	

EC-3, 17 APR 2025 to 15 MAY 2025

EC-3, 17 APR 2025 to 15 MAY 2025

- REIL Rwy 22 0
- HIRL Rwy 4-22 0
- MIRL Rwy 16-34 0