

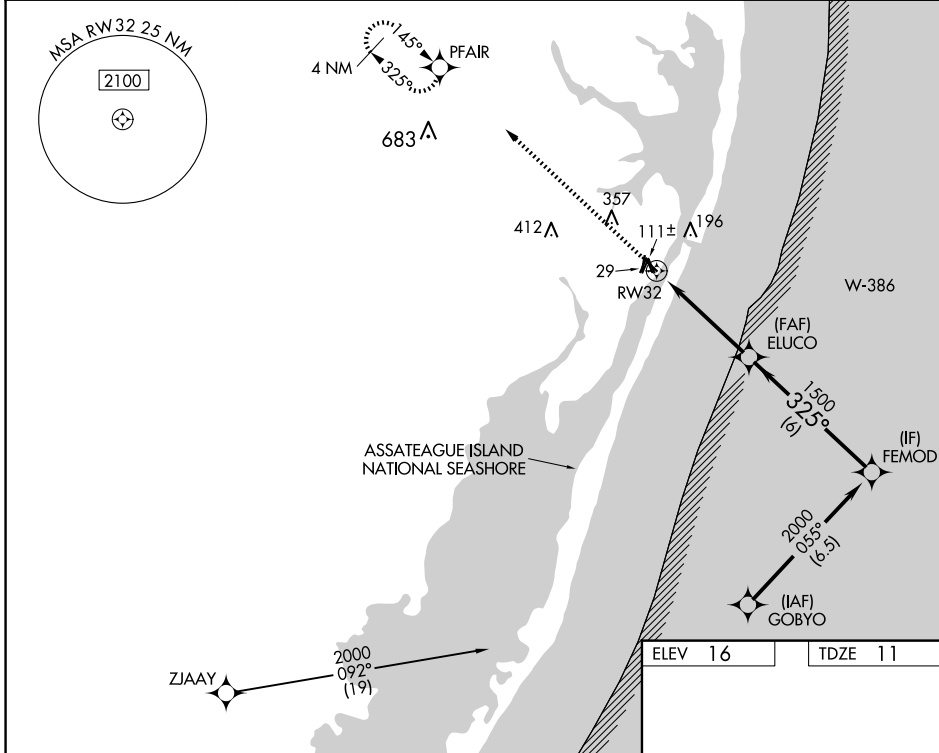
WAAS CH 61246 W32A	APP CRS 325°	Rwy ldg 4074
	TDZE 11	
	Apt Elev 16	

RNAV (GPS) RWY 32

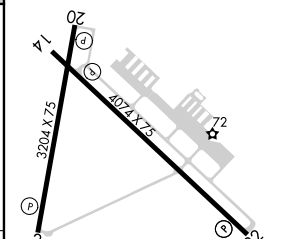
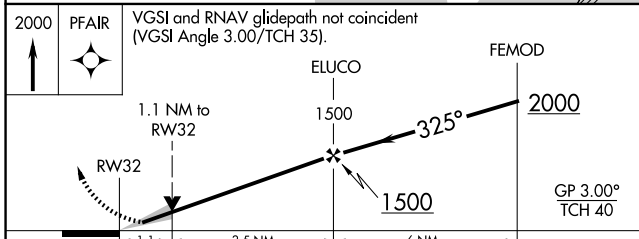
OCEAN CITY MUNI (OXB)

RNP APCH - GPS.	MISSED APPROACH: Climb to 2000 direct PFAIR and hold.
<p>For uncorrected Baro-VNAV systems, LNAV/VNAV NA below -11°C or above 54° C.</p>	

ASOS 119.025	PATUXENT APP CON ★ 127.95 314.0	CLNC DEL 121.75	UNICOM 123.05 (CTAF)
------------------------	---	---------------------------	--------------------------------



ELEV 16	TDZE 11
---------	---------



CATEGORY	A	B	C	D
LPV DA		261-1	250 (300-1)	
LNAV/VNAV DA		289-1	278 (300-1)	
LNAV MDA		380-1	369 (400-1)	

REIL Rwys 2 and 20
REIL Rwys 14 and 32
MIRL Rwys 2-20 and 14-32

NE-3, 17 APR 2025 to 15 MAY 2025

NE-3, 17 APR 2025 to 15 MAY 2025