

APP CRS 179°	Rwy Idg TDZE Apt Elev	N/A N/A 954
------------------------	-----------------------------	--

RNAV (GPS)-B

GARDNER MUNI (GDM)

RNP APCH - GPS.

⚠ Procedure NA at night. Rwy 18 helicopter visibility reduction below 1 SM NA. Use ORH altimeter setting, when not received use ORE altimeter setting and increase all MDAs 40 feet.

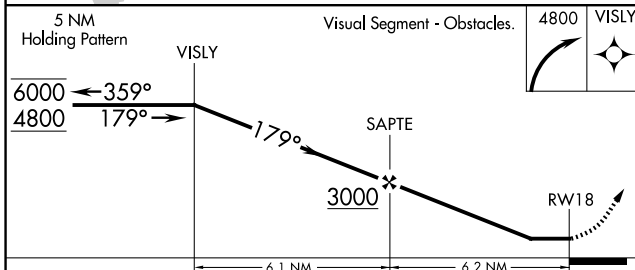
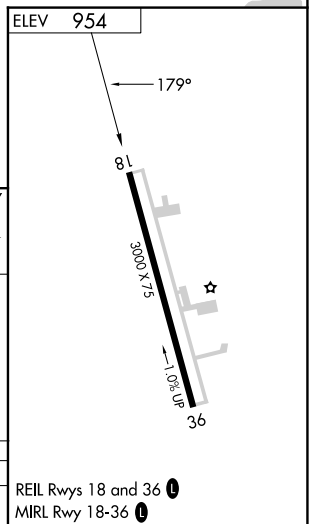
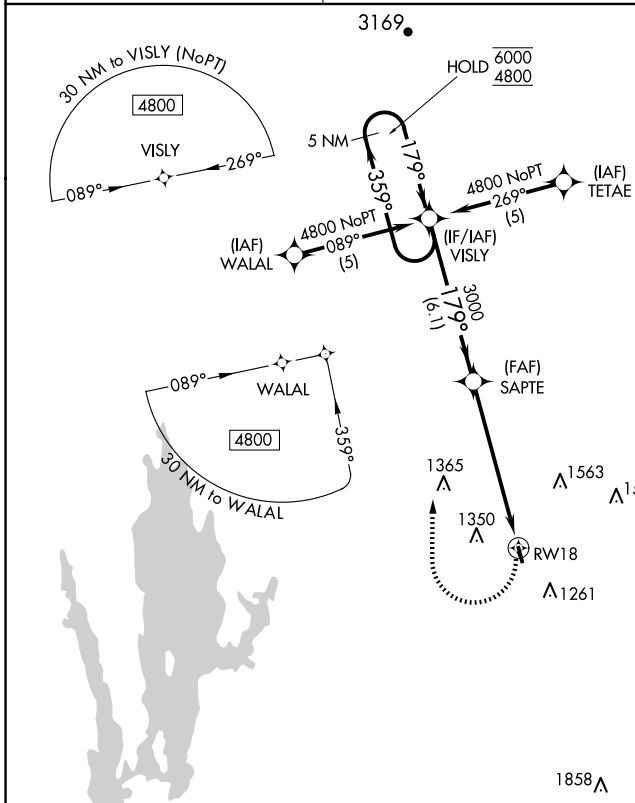
⚠ NA

MISSED APPROACH: Climbing right turn to 4800 direct VISLY and hold, continue climb-in-hold to 4800.

ORH ASOS
126.55

BOSTON CENTER
123.75 338.2

UNICOM
122.8 (CTAF) 0



CATEGORY	A	B	C	D
CIRCLING	1800-1¼	846 (900-1¼)	1980-3	1026 (1100-3)

REIL Rwy 18 and 36 **0**

MIRL Rwy 18-36 **0**

NE-1, 17 APR 2025 to 15 MAY 2025

NE-1, 17 APR 2025 to 15 MAY 2025