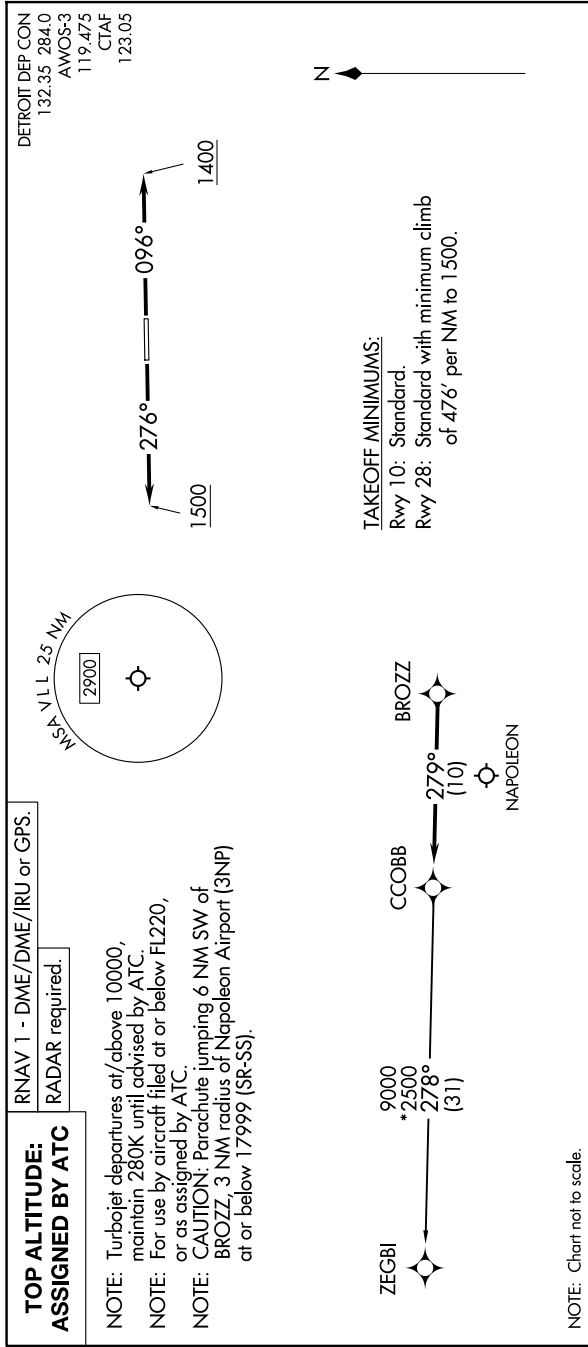


EC-1, 17 APR 2025 to 15 MAY 2025



NOTE: Chart not to scale.

**DEPARTURE ROUTE DESCRIPTION**

**TAKEOFF RUNWAY 10:** Climb on heading 096° to 1400 then as assigned by ATC, thence...  
**TAKEOFF RUNWAY 28:** Climb on heading 276° to 1500 then as assigned by ATC, thence...

...for RADAR vectors to BROZZ, then on track 279° to CCOBB, then on (transition). Maintain ATC assigned altitude, expect filed altitude 10 minutes after departure.

**ZEGBI TRANSITION (CCOBB3.ZEGBI):**

EC-1, 17 APR 2025 to 15 MAY 2025