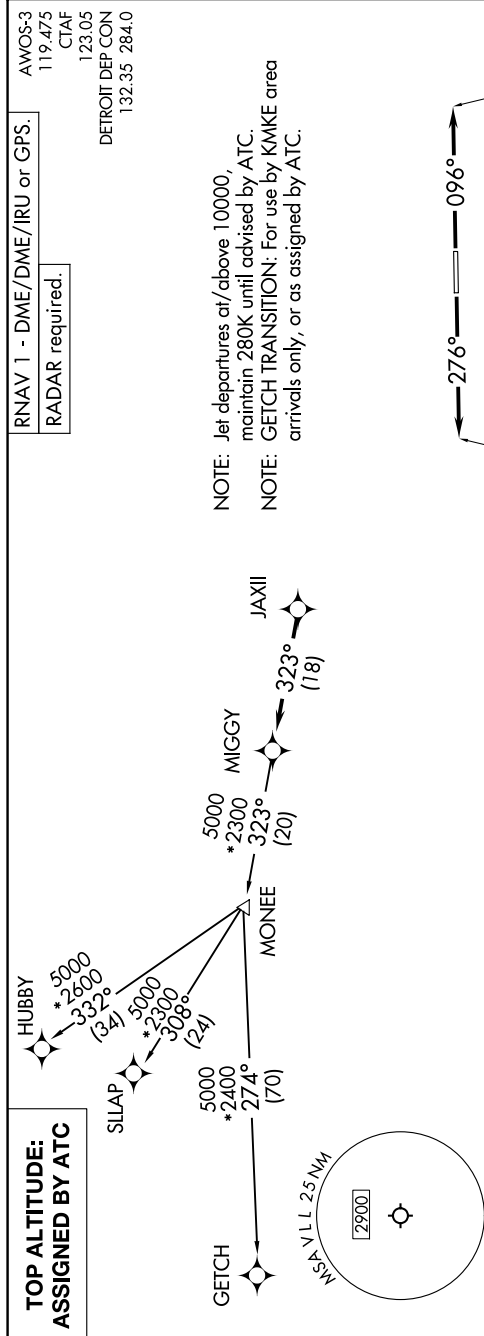


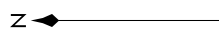
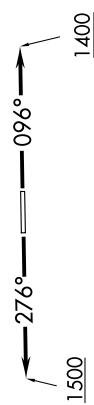
EC-1, 17 APR 2025 to 15 MAY 2025



RNAV 1 - DME/DME/IRU or GPS. RADAR required.

AWOS-3 119.475  
CTAF 123.05  
DETROIT DEP CON 132.35 284.0

NOTE: Jet departures at/above 10000, maintain 280K until advised by ATC.  
NOTE: GETCH TRANSITION: For use by KMKE area arrivals only, or as assigned by ATC.



TAKEOFF MINIMUMS:

Rwy 10: Standard.  
Rwy 28: Standard with minimum climb of 476' per NM to 1500.

NOTE: Chart not to scale.

**DEPARTURE ROUTE DESCRIPTION**

**TAKEOFF RUNWAY 10:** Climb on heading 096° to 1400 then as assigned by ATC, thence....

**TAKEOFF RUNWAY 28:** Climb on heading 276° to 1500 then as assigned by ATC, thence....

....for RADAR vectors to JAXII, then on track 323° to MIGGY, then on (transition). Maintain 17000 or as assigned by ATC, expect filed altitude 10 minutes after departure.

GETCH TRANSITION (MIGGY3.GETCH):  
HUBBY TRANSITION (MIGGY3.HUBBY):  
SLLAP TRANSITION (MIGGY3.SLLAP):

EC-1, 17 APR 2025 to 15 MAY 2025