

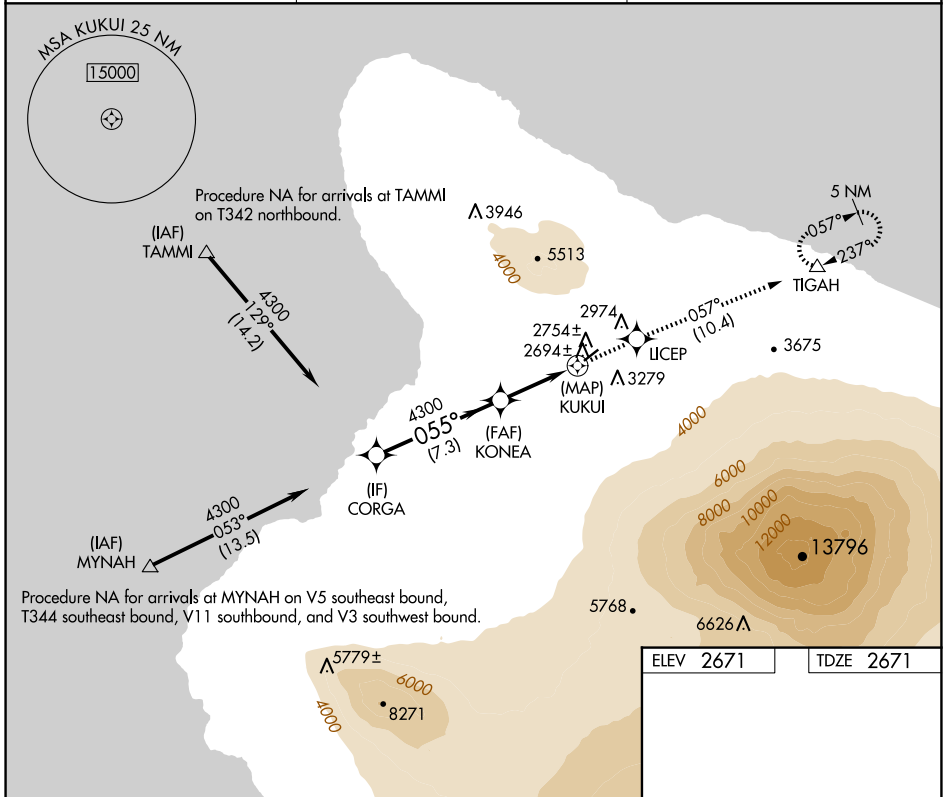
APP CRS	Rwy Idg	5197
055°	TDZE	2671
	Apt Elev	2671

RNAV (GPS) RWY 4

WAIMEA-KOHALA (MUE)(PHMU)

RNP APCH - GPS.	MISSED APPROACH: Climb to 5000 direct LICEP and on track 057° to TIGAH and hold.
<p>▼ Circling NA northwest of Rwy 4-22.</p> <p>▲ NA When local altimeter setting not received, procedure NA.</p>	

AWOS-3PT 120.0	HCF CENTER 118.45 278.3	CTAF 122.9 0
--------------------------	-----------------------------------	------------------------

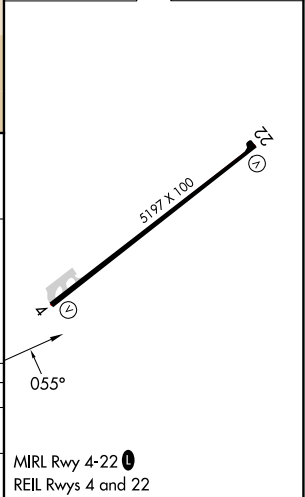


PAC, 17 APR 2025 to 12 JUN 2025

PAC, 17 APR 2025 to 12 JUN 2025

VGSIs and descent angles not coincident (VGSIs Angle 2.50/TCH 43).		5000	LICEP	tr 057°	TIGAH
CORGA	KONA				
4300	4300				
7.3 NM		3 NM		1.5	0.5
KUKUI		1.5 NM to KUKUI			
3.00°		TCH 45			
CATEGORY		A	B	C	D
LNAV MDA		3220-1	549 (600-1)	3220-1½	549 (600-1½)
CIRCLING		3520-1¼	849 (900-1¼)	3620-2¾	3980-3
			949 (1000-2¾)	1309 (1400-3)	

ELEV 2671	TDZE 2671
-----------	-----------



MIRL Rwy 4-22 0
REIL Rws 4 and 22