

VOR/DME MUE 113.3 Chan 80	APP CRS 237°	Rwy Idg TDZE Apt Elev	N/A N/A 2671
---	------------------------	-----------------------------	---

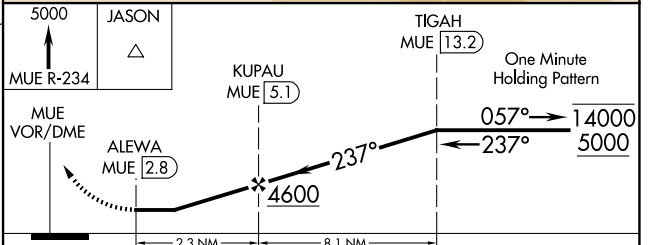
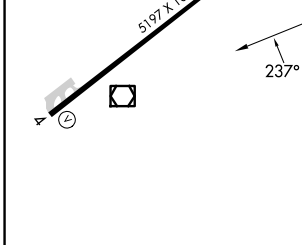
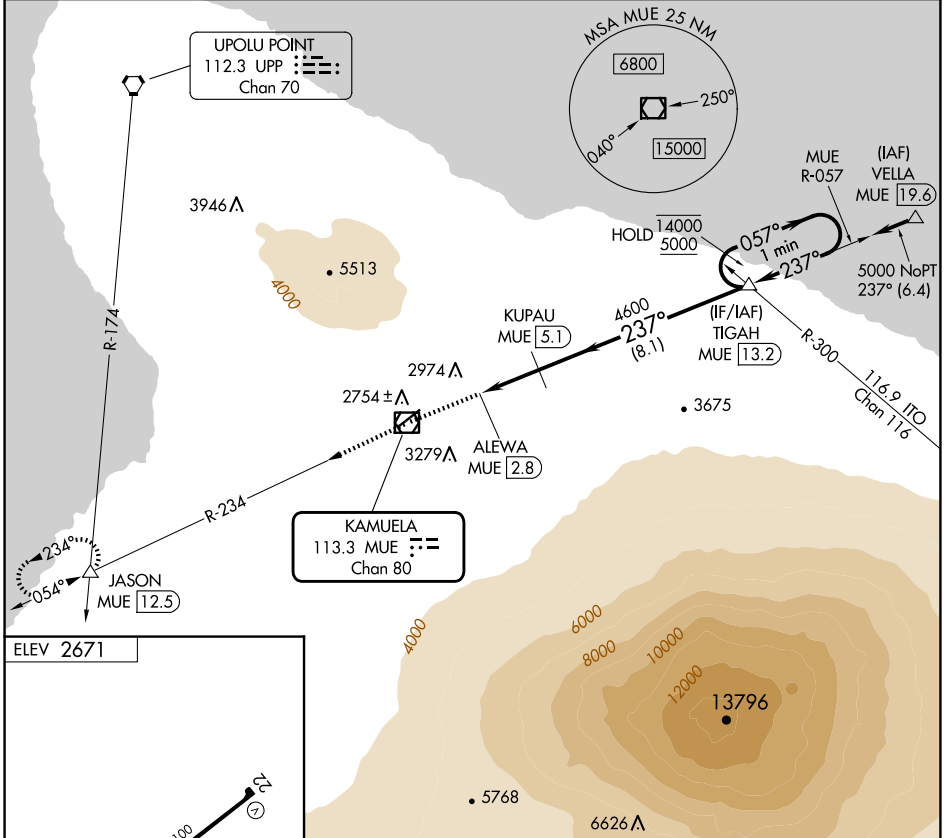
VOR-A
WAIMEA-KOHALA (MUE)(PHMU)

DME required.

When local altimeter setting not received, procedure NA.
Circling NA northwest of Rwy 4-22.

MISSED APPROACH: Climb to 5000 on MUE VOR/DME R-234 to JASON INT/12.5 DME and hold.

AWOS-3PT 120.0	HCF CENTER 118.45 278.3	CTAF 122.90
--------------------------	-----------------------------------	-----------------------



MIRL Rwy 4-22 Δ REIL Rws 4 and 22	CATEGORY	A	B	C	D
	CIRCLING	3680-2 $\frac{3}{4}$	1009 (1100-2 $\frac{3}{4}$)	3680-3 1009 (1100-3)	3980-3 1309 (1400-3)

PAC. 17 APR 2025 to 12 JUN 2025

PAC. 17 APR 2025 to 12 JUN 2025