

VOR/DME MUE <b>113.3</b> Chan 80	APP CRS <b>054°</b>	Rwy Idg TDZE Apt Elev	<b>5197</b> <b>2671</b> <b>2671</b>
--	------------------------	-----------------------------	---

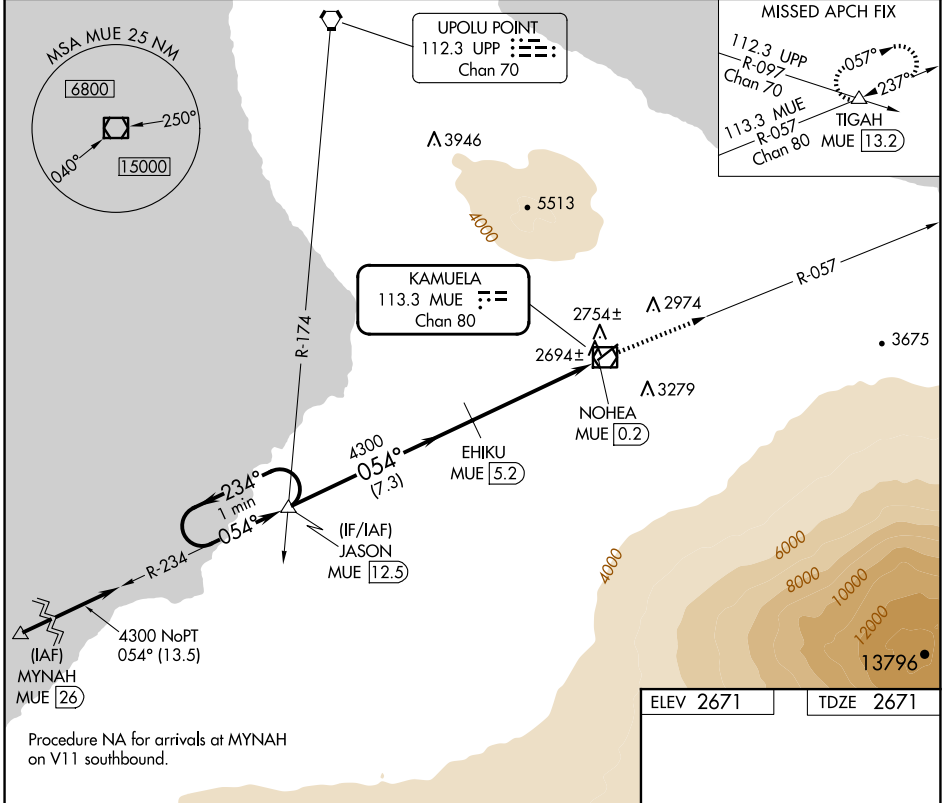
# VOR/DME RWY 4

WAIMEA-KOHALA (MUE)(PHMU)

**NA** Circling NA northwest of Rwy 4-22.  
When local altimeter setting not received, procedure NA.

MISSED APPROACH: Climb to 5000 on MUE VOR/DME R-057 to TIGAH INT/MUE 13.2 DME and hold.

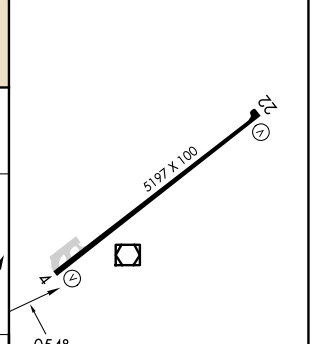
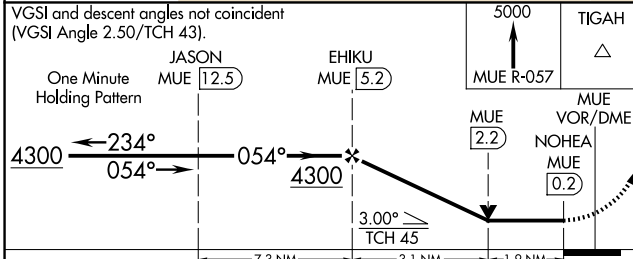
AWOS-3PT <b>120.0</b>	HCF CENTER <b>118.45 278.3</b>	CTAF <b>122.9</b>
--------------------------	-----------------------------------	----------------------



PAC, 17 APR 2025 to 12 JUN 2025

PAC, 17 APR 2025 to 12 JUN 2025

ELEV 2671	TDZE 2671
-----------	-----------



CATEGORY	A	B	C	D
S-4	3360-1 689 (700-1)		3360-2 689 (700-2)	
CIRCLING	3520-1¼ 849 (900-1¼)		3620-2¾ 949 (1000-2¾)	3980-3 1309 (1400-3)

MIRL Rwy 4-22  
REIL Rws 4 and 22