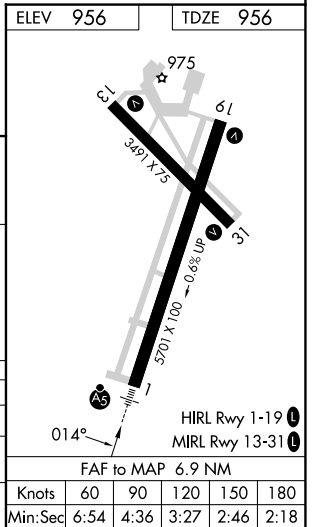
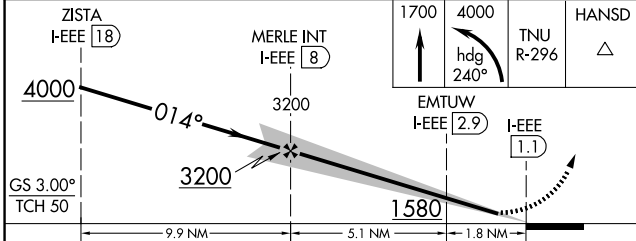
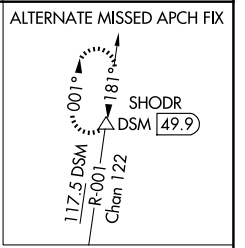
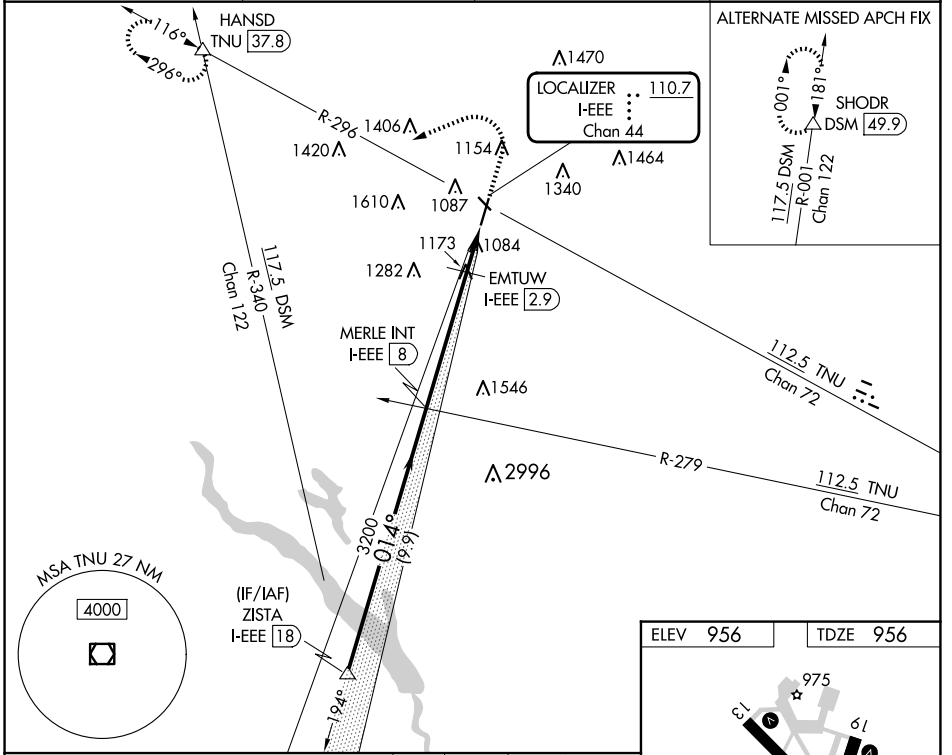


LOC/DME I-EEE <b>110.7</b> Chan 44	APP CRS <b>014°</b>	Rwy Idg TDZE <b>956</b> Apt Elev <b>956</b>
--	------------------------	---

# ILS or LOC RWY 1

AMES MUNI (AMW)

DME required.		MALSR	MISSED APPROACH: Climb to 1700 then climbing left turn to 4000 on heading 240° and TNU VOR/DME R-296 to HANSD INT/37.8 DME and hold, continue climb-in-hold to 4000.
NA -27°C For inop ALS increase S-LOC 1 Cat C/D visibility to 1 3/8 SM.			
ASOS <b>132.025</b>	DES MOINES APP CON <b>123.9 307.15</b>	CLNC DEL <b>126.0</b>	UNICOM <b>122.7 (CTAF)</b>



CATEGORY	A	B	C	D
S-ILS 1	1206-1/2		250 (300-1/2)	
S-LOC 1	1440-1/2 484 (500-1/2)		1440-1 484 (500-1)	
CIRCLING	1440-1 484 (500-1)	1460-1 504 (600-1)	1640-2 684 (700-2)	1960-3 1004 (1100-3)

NC-3, 17 APR 2025 to 15 MAY 2025

NC-3, 17 APR 2025 to 15 MAY 2025