

LOC/DME I-VQO <b>111.1</b> Chan 48	APP CRS <b>075°</b>	Rwy Idg <b>3502</b> TDZE <b>8</b> Apt Elev <b>8</b>
--	------------------------	---

# ILS or LOC RWY 7

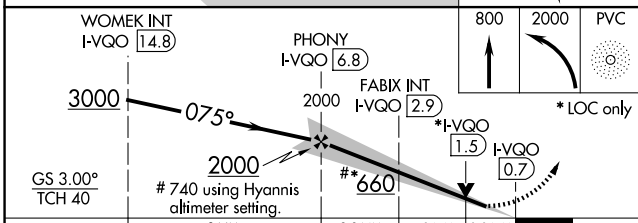
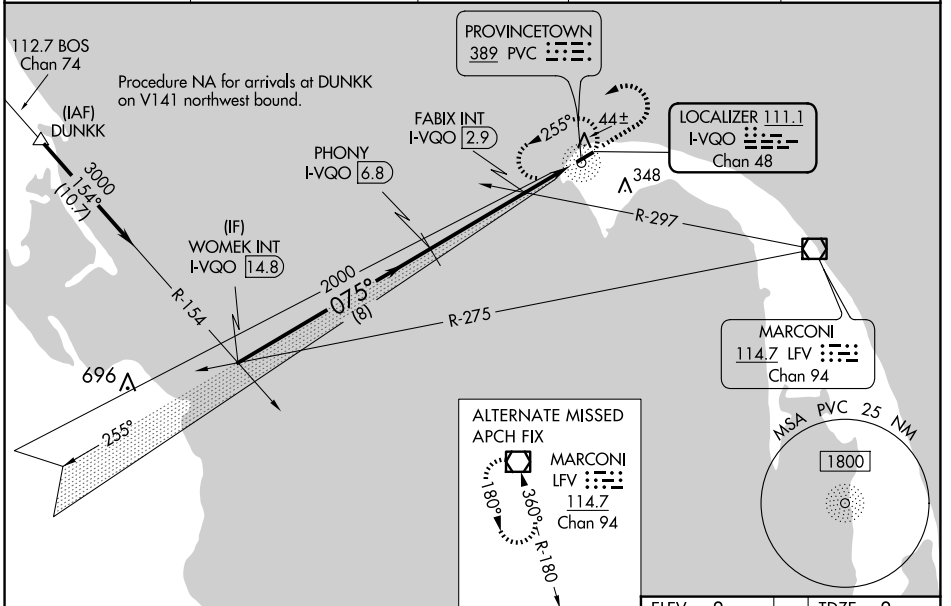
PROVINCETOWN MUNI (PVC)

DME required for LOC only, ADF.

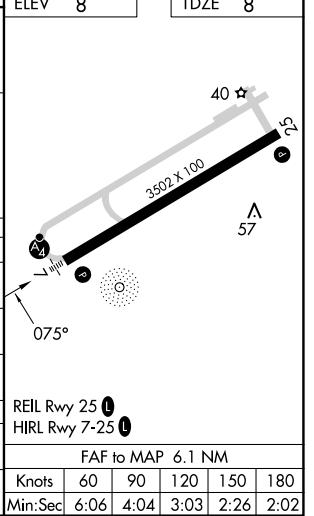
**NA** Inop table does not apply to S-ILS 7. When local altimeter setting not received, use Hyannis altimeter setting and increase all DA to 271 and all MDA 80 feet: increase S-LOC 7 and FABIX fix minimums S-LOC 7 all Cats visibility 1/4 SM. VDP NA when using Hyannis altimeter setting. For inop ALS when using Hyannis altimeter setting, increase S-ILS 7 all Cats visibility to 7/8 SM.

**MALSF** MISSED APPROACH: Climb to 800 then climbing left turn to 2000 direct PVC NDB and hold, continue climb-in-hold to 2000.

AWOS-3PT <b>119.275</b>	BOSTON APP CON <b>118.2</b>	CLNC DEL <b>120.65</b>	UNICOM <b>122.8</b> (CTAF)	<b>122.85</b> <b>0</b>
----------------------------	--------------------------------	---------------------------	-------------------------------	------------------------



CATEGORY	A	B	C	D
S-ILS 7	208-3/4	200 (200-3/4)		NA
S-LOC 7	660-3/4	652 (700-3/4)		NA
<b>C</b> CIRCLING	660-1	652 (700-1)		NA
FABIX FIX MINIMUMS (DUAL VOR RECEIVERS OR DME REQUIRED)				
S-LOC 7	320-3/4	312 (400-3/4)		NA
<b>C</b> CIRCLING	460-1 452 (500-1)	660-1 652 (700-1)		NA



NE-1, 17 APR 2025 to 15 MAY 2025

NE-1, 17 APR 2025 to 15 MAY 2025