

COPTER RNAV (GPS) Y RWY 14

MANSFIELD MUNI (1B9)

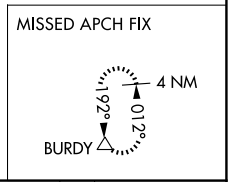
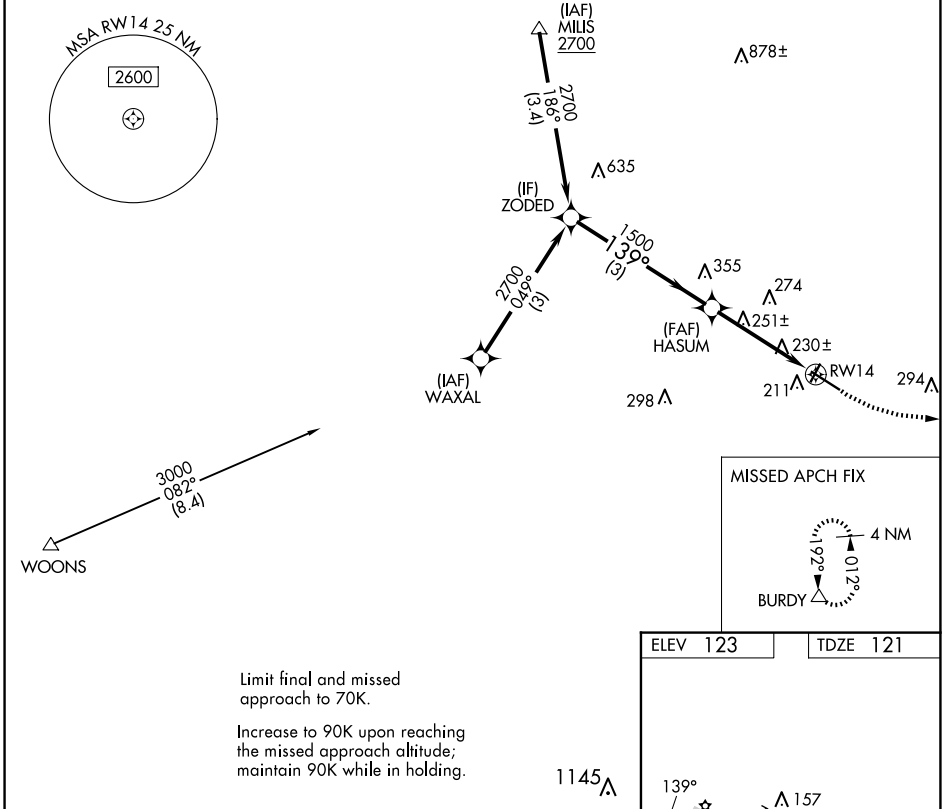
WAAS CH 50444 W14B	APP CRS 139°	Rwy ldg 2991
	TDZE 121	
	Apt Elev 123	

RNP APCH - GPS.

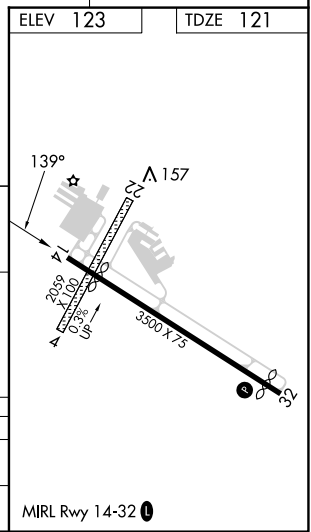
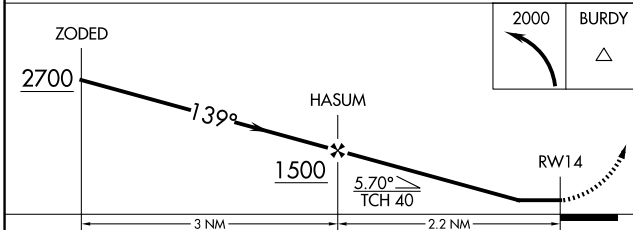
NA Procedure NA at night. Use Taunton altimeter setting.

MISSED APPROACH: Climbing left turn to 2000 direct BURDY and hold.

AWOS-3PT 118.675	TAN ASOS 132.675	BOSTON APP CON 124.1	UNICOM 123.0 (CTAF)
----------------------------	----------------------------	--------------------------------	-------------------------------



Limit final and missed approach to 70K.
Increase to 90K upon reaching the missed approach altitude; maintain 90K while in holding.



CATEGORY		COPTER	
LP	MDA	520-1	399 (400-1)
LNAV	MDA	580-1	459 (500-1)

NE-1, 17 APR 2025 to 15 MAY 2025

NE-1, 17 APR 2025 to 15 MAY 2025