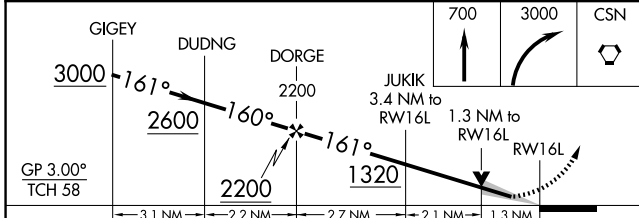
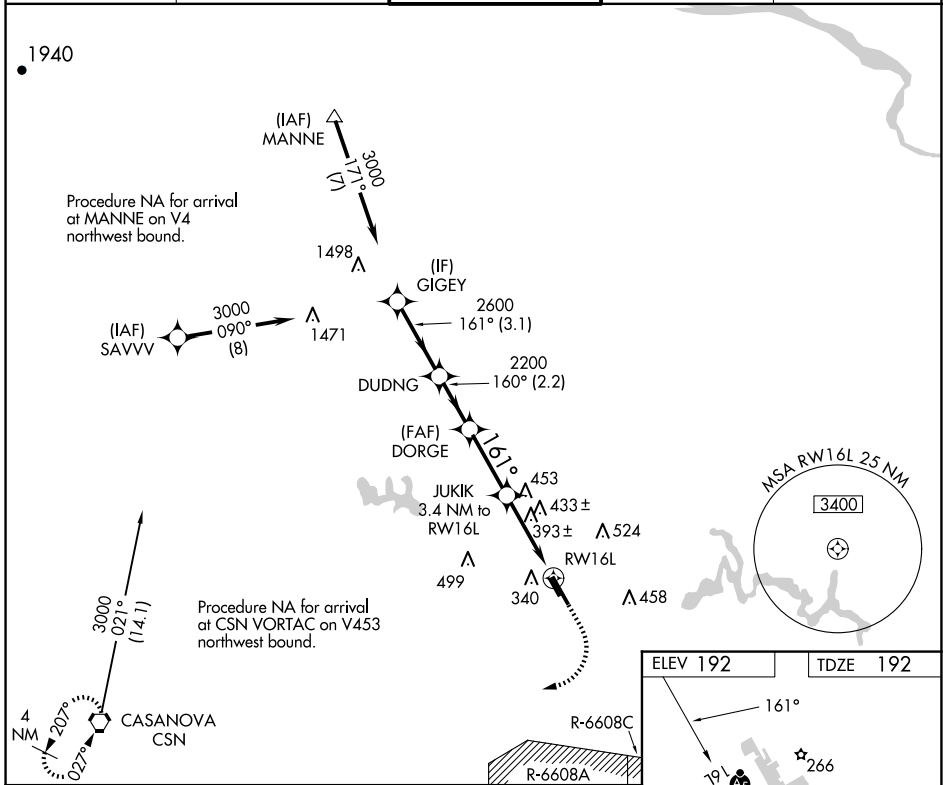


WAAS CH 70302 W16A	APP CRS 161°	Rwy ldg TDZE 192 Apt Elev 192
--	------------------------	---

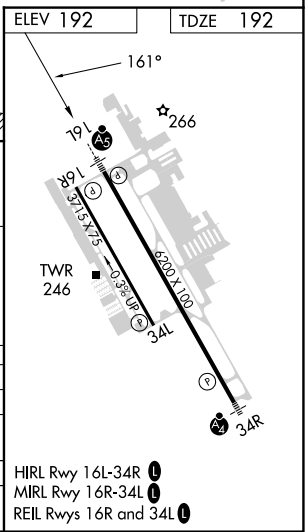
RNAV (GPS) RWY 16L

MANASSAS RGNL/HARRY P DAVIS FLD (HEF)

RNP APCH - GPS.		MALSRL	MISSED APPROACH: Climb to 700 then climbing right turn to 3000 direct CSN VORTAC and hold.	
<p>▼ For uncompensated Baro-VNAV systems, LNAV/VNAV NA below -15°C or above 54°C. For inop ALS, increase LNAV Cat C/D visibility to 1½ SM.</p>				
ATIS 125.175	POTOMAC APP CON 128.525 306.925	MANASSAS TOWER ★ 133.1 (CTAF) 0 360.75	GND CON 121.8	CLNC DEL 120.2



CATEGORY	A	B	C	D
LPV DA		442-½	250 (300-½)	
LNAV/VNAV DA		635-7/8	443 (500-7/8)	
LNAV MDA	660-½	468 (500-½)	660-1	468 (500-1)
CIRCLING	720-1	740-1	840-1¾	880-2¼
	528 (600-1)	548 (600-1)	648 (700-1¾)	688 (700-2¼)



NE-3, 17 APR 2025 to 15 MAY 2025

NE-3, 17 APR 2025 to 15 MAY 2025

- HIRL Rwy 16L-34R ①
- MIRL Rwy 16R-34L ①
- REIL Rwy 16R and 34L ①