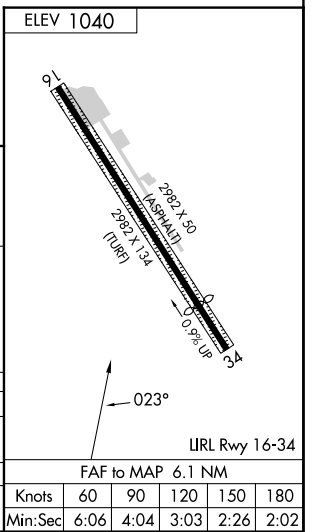
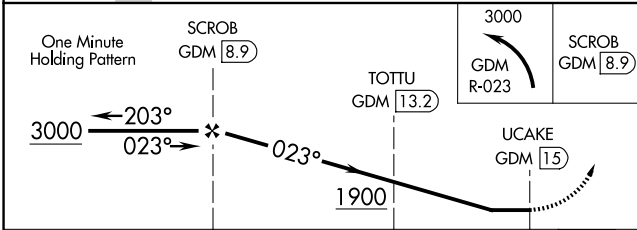
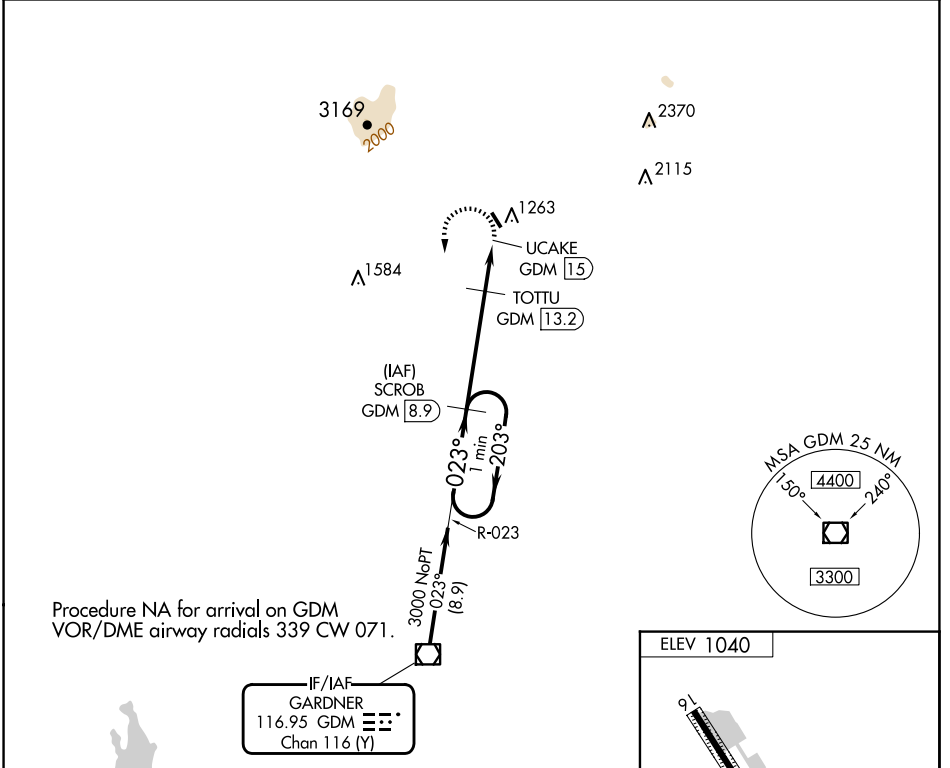


VOR/DME GDM 116.95 Chan 116 (Y)	APP CRS 023°	Rwy Idg TDZE Apt Elev N/A N/A 1040
-----------------------------------------------------	------------------------	------------------------------------------------------------------------

VOR-A

JAFFREY AIRFIELD SILVER RANCH (A/FN)

DME required. ⚠ When local altimeter setting not received, use KEENE altimeter setting and increase all MDA 120 feet; increase Cat B and TOTTU fix minimums all Cats visibility ¼ mile. Procedure NA at night. Rwy 16 and 34 helicopter visibility reduction below 1 SM NA.		MISSED APPROACH: Climbing left turn to 3000 on GDM VOR/DME R-023 to SCROB/GDM 8.9 DME and hold.
ASOS 135.875	BOSTON CENTER 123.75 338.2	UNICOM 122.8 (CTAF)



CATEGORY	A	B	C	D
CIRCLING	1900-1¼	860 (900-1¼)	NA	
TOTTU FIX MINIMUMS				
CIRCLING	1780-1 740 (800-1)	1820-1 780 (800-1)	NA	

FAF to MAP 6.1 NM					
Knots	60	90	120	150	180
Min:Sec	6:06	4:04	3:03	2:26	2:02

NE-1, 17 APR 2025 to 15 MAY 2025

NE-1, 17 APR 2025 to 15 MAY 2025