

(FLMGO2.FLMGO) 24137

AL-5349 (FAA)

MIAMI EXEC (TMB)  
MIAMI, FLORIDA

# FLMGO TWO DEPARTURE(RNAV)

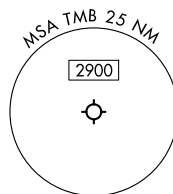
RNAV 1 - DME/DME/IRU or GPS.

RADAR required.

**TOP ALTITUDE:  
ASSIGNED BY ATC**

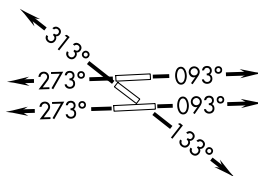
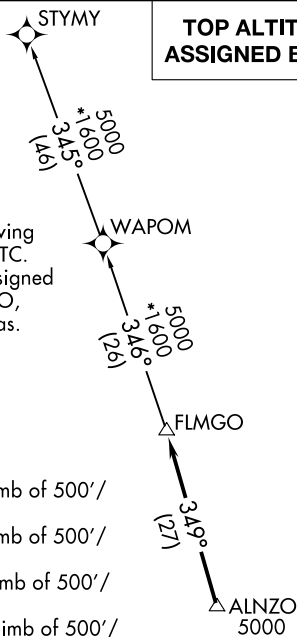
MIAMI DEP CON  
125.5 354.1  
ATIS  
124.0  
CLNC DEL  
133.0  
GND CON  
121.7  
MIAMI EXEC TOWER★  
118.9 (CTAF)

NOTE: Jet aircraft only.  
NOTE: Accelerate to 250K until leaving  
10000, if unable, advise ATC.  
NOTE: WAPOM Transition ATC assigned  
except aircraft landing: MCO,  
DAB, and MLB terminal areas.



### TAKEOFF MINIMUMS

- Rwy 9L: Standard with minimum climb of 500'/NM to 1300.
- Rwy 9R: Standard with minimum climb of 500'/NM to 1500.
- Rwy 13: Standard with minimum climb of 500'/NM to 1800.
- Rwy 27L: Standard with minimum climb of 500'/NM to 1900.
- Rwy 27R: Standard with minimum climb of 500'/NM to 1700.
- Rwy 31: Standard with minimum climb of 500'/NM to 1400.



NOTE: Chart not to scale.

### DEPARTURE ROUTE DESCRIPTION

- TAKEOFF RUNWAYS 9L/R: Climb on heading 093° or as assigned by ATC for RADAR vectors to cross ALNZO at or above 5000, thence. . . .
- TAKEOFF RUNWAY 13: Climb on heading 133° or as assigned by ATC for RADAR vectors to cross ALNZO at or above 5000, thence. . . .
- TAKEOFF RUNWAYS 27L/R: Climb on heading 273° or as assigned by ATC for RADAR vectors to cross ALNZO at or above 5000, thence. . . .
- TAKEOFF RUNWAY 31: Climb on heading 313° or as assigned by ATC for RADAR vectors to cross ALNZO at or above 5000, thence. . . .

. . . on track 349° to FLMGO, then on assigned transition. Maintain ATC assigned altitude. Expect filed altitude within 10 minutes after departure.

STYMY TRANSITION (FLMGO2.STYMY)  
WAPOM TRANSITION (FLMGO2.WAPOM)

FLMGO TWO DEPARTURE(RNAV)  
(FLMGO2.FLMGO) 21MAR24

MIAMI, FLORIDA  
MIAMI EXEC (TMB)

SE-3, 17 APR 2025 to 15 MAY 2025

SE-3, 17 APR 2025 to 15 MAY 2025