

# MAYNR THREE DEPARTURE (RNAV)

SE-3, 17 APR 2025 to 15 MAY 2025

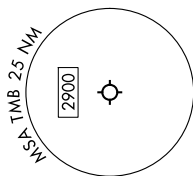
MIAMI DEP CON  
125.5 354.1  
ATIS  
124.0  
CLNC DEL  
133.0  
GND CON  
121.7  
MIAMI EXEC TOWER \*  
118.9 (CTAF)

# MAYNR THREE DEPARTURE (RNAV)

MIAMI, FLORIDA  
MIAMI EXEC (TMB)

**TAKEOFF MINIMUMS**  
Rwy 9L: Standard with minimum climb of 500'/NM to 1300.  
Rwy 9R: Standard with minimum climb of 500'/NM to 1500.  
Rwy 13: Standard with minimum climb of 500'/NM to 1800.  
Rwy 27L: Standard with minimum climb of 500'/NM to 1900.  
Rwy 27R: Standard with minimum climb of 500'/NM to 1700.  
Rwy 31: Standard with minimum climb of 500'/NM to 1400.

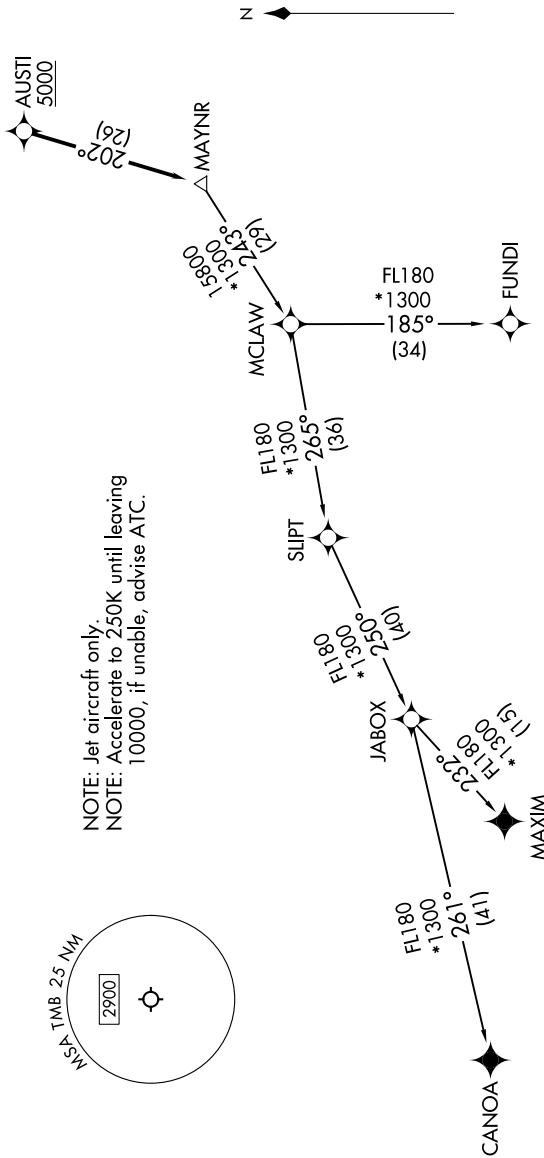
NOTE: Jet aircraft only.  
NOTE: Accelerate to 250K until leaving 10000, if unable, advise ATC.



**TOP ALTITUDE:  
ASSIGNED BY ATC**



RNAV 1 - DME/DME/IRU or GPS.  
From SLIPT to MAXIM: RNAV 1 - GPS.  
From SLIPT to CANOA: RNAV 1 - GPS.  
RADAR required for non-GPS equipped aircraft.  
RADAR required.



(CONTINUED ON FOLLOWING PAGE)

NOTE: Chart not to scale.

SE-3, 17 APR 2025 to 15 MAY 2025