

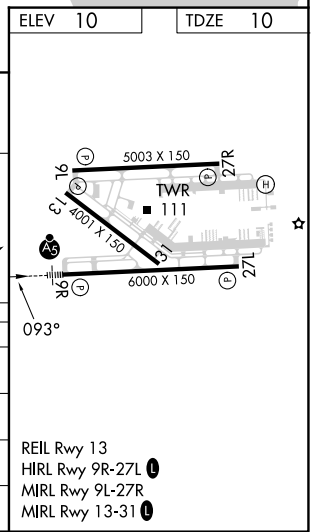
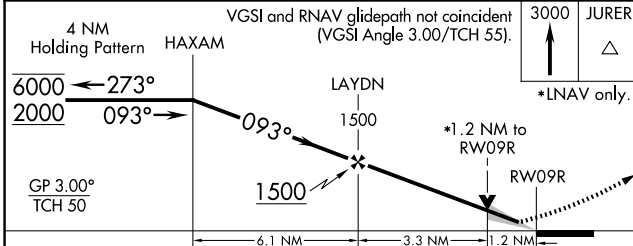
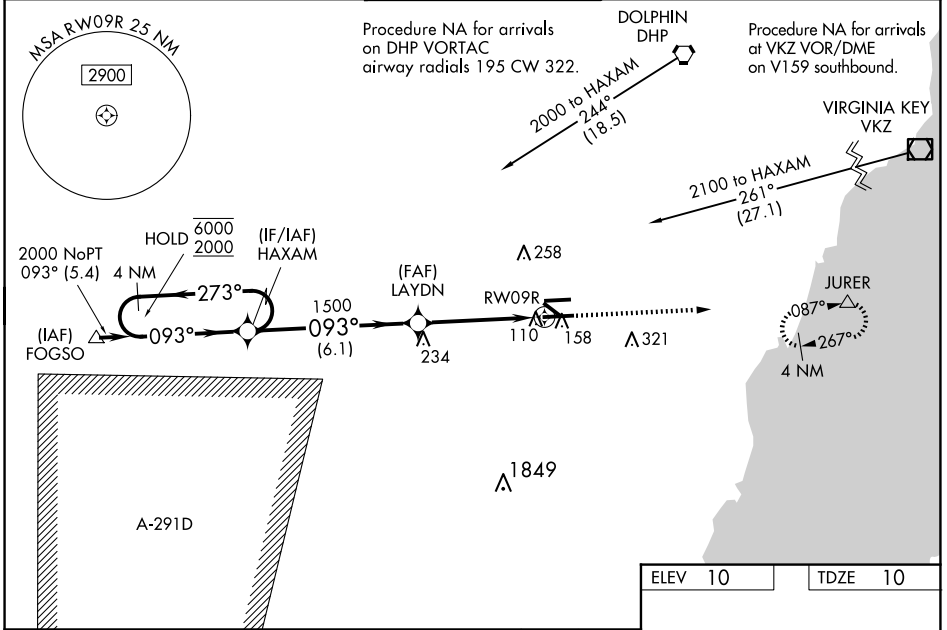
WAAS CH 72900 W09A	APP CRS 093°	Rwy Idg TDZE Apt Elev	6000 10 10
--	------------------------	-----------------------------	---------------------------------------

RNAV (GPS) RWY 9R

MIAMI EXEC (TMB)

RNP APCH.	<p>⚠ Circling Rwy 13, 31 NA at night. For uncompensated Baro-VNAV systems, LNAV/VNAV NA below -15°C or above 43°C. Baro-VNAV and VDP NA when using Miami Intl altimeter setting. When local altimeter setting not received, use Miami Intl altimeter setting and increase all DA by 27 feet and all MDA 40 feet, increase LNAV Cats C/D visibility ½ SM. For inop ALS when using Miami Intl altimeter setting, increase LNAV/VNAV all Cats visibility to ¾ SM, and LNAV Cat C/D visibility to 1 ½ SM.</p>	<p>MALSRL</p>	<p>MISSED APPROACH: Climb to 3000 direct JURER and hold, continue climb-in-hold to 3000.</p>
-----------	---	---------------	--

ATIS 124.0	MIAMI APP CON 125.5 354.1	MIAMI EXEC TOWER* 118.9 (CTAF) 0	GND CON 121.7	CLNC DEL 133.0
----------------------	-------------------------------------	--	-------------------------	--------------------------



CATEGORY	A	B	C	D
LPV DA		210-½	200 (200-½)	
LNAV/VNAV DA		302-½	292 (300-½)	
LNAV MDA	460-½	450 (500-½)	460-⅞	450 (500-⅞)
CIRCLING	460-1 450 (500-1)	560-1 550 (600-1)	640-1¼ 630 (700-1¼)	640-2 630 (700-2)

SE-3, 17 APR 2025 to 15 MAY 2025

SE-3, 17 APR 2025 to 15 MAY 2025