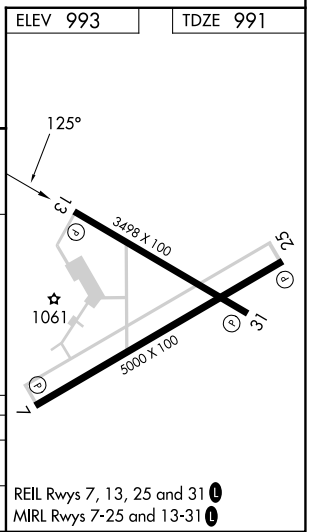
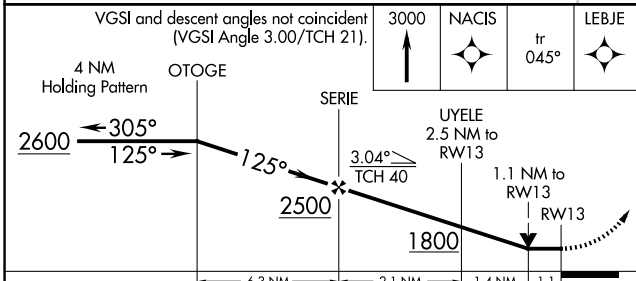
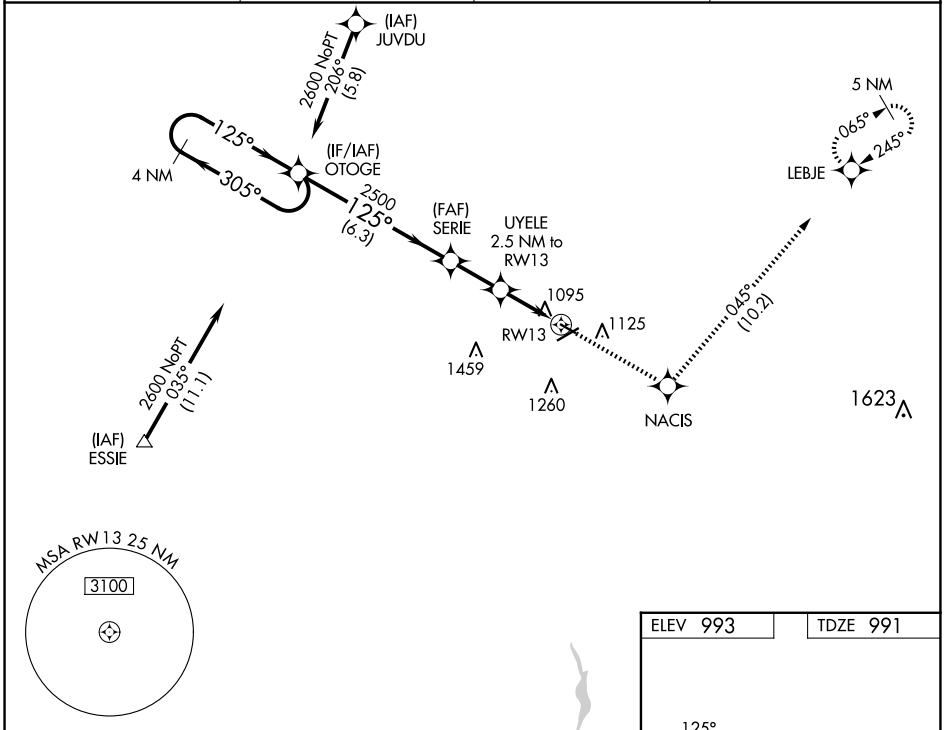


|             |          |             |
|-------------|----------|-------------|
| APP CRS     | Rwy Idg  | <b>3498</b> |
| <b>125°</b> | TDZE     | <b>991</b>  |
|             | Apt Elev | <b>993</b>  |

# RNAV (GPS) RWY 13

MARION MUNI (MNN)

|   |                      |  |                       |
|---|----------------------|--|-----------------------|
| RNP APCH.   |                      | MISSED APPROACH: Climb to 3000 direct NACIS and on track 045° to LEBJE and hold. |                       |
| <p>▼ Rwy 13 helicopter visibility reduction below ¾ SM NA. VDP NA when using Ohio State University altimeter setting. When local altimeter setting not received, use Ohio State University altimeter setting: increase all MDAs 100 feet and visibility Cat C/D ¾ SM.</p> |                      |  |                       |
| ASOS  | CLEVELAND APP CON *  | CLNC DEL   | UNICOM                |
| <b>119.975</b>  | <b>128.35 360.65</b> | <b>126.8</b>   | <b>122.8 (CTAF) 0</b> |



| CATEGORY | A                  | B                  | C                    | D                    |
|----------|--------------------|--------------------|----------------------|----------------------|
| LNVA MDA | 1360-1 369 (400-1) |                    | 1360-1¼ 369 (400-1¼) |                      |
| CIRCLING | 1480-1 487 (500-1) | 1500-1 507 (600-1) | 1700-2 707 (800-2)   | 1820-2¾ 827 (900-2¾) |

EC-2, 17 APR 2025 to 15 MAY 2025

EC-2, 17 APR 2025 to 15 MAY 2025