

WAAS CH 57905 W10A	APP CRS 103°	Rwy Idg 5001 TDZE 308 Apt Elev 310
--	------------------------	---

RNAV (GPS) RWY 10

CRISP COUNTY-CORDELE (CKF)

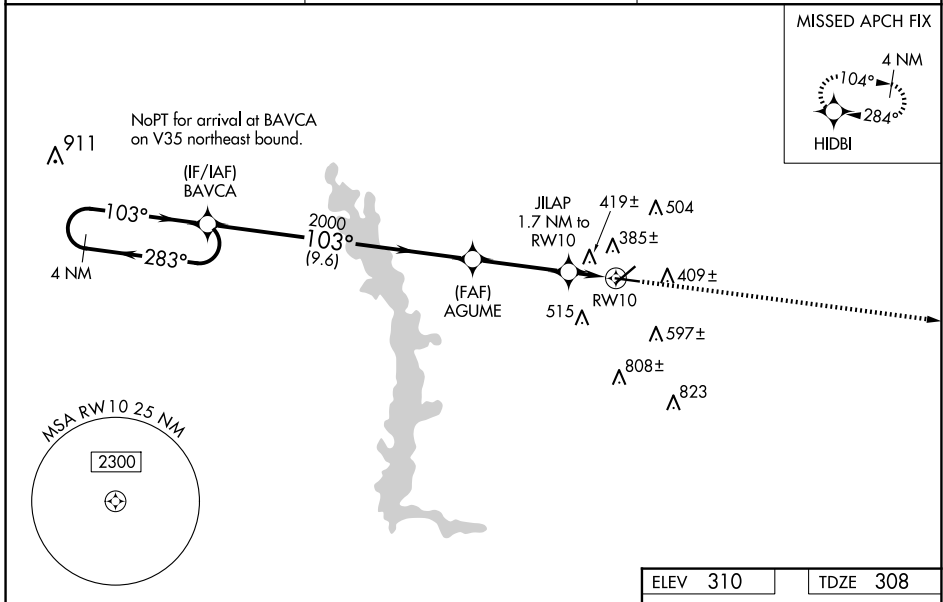
RNP APCH-GPS.

▼ For uncompensated Baro-VNAV systems, LNAV/VNAV NA below -15°C or above 54°C. Rwy 10 helicopter visibility reduction below 3/4 SM NA. Circling Rwy 28 NA at night. Inop table does not apply to LPV and LNAV all Cats. For inop ALS, increase LNAV/VNAV Cat A/B visibility to 1 1/2 SM.

ODALS

MISSED APPROACH: Climb to 2100 direct HIDBI and hold.

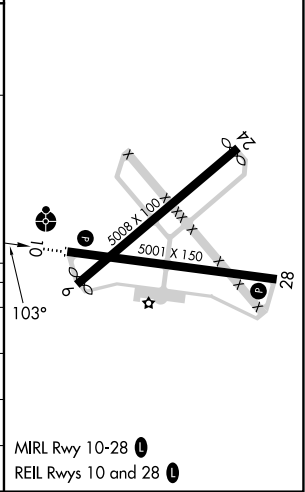
AWOS-3PT 119.325	JACKSONVILLE CENTER 125.75 363.075	UNICOM 123.050 (CTAF)
----------------------------	--	---------------------------------



SE-4, 17 APR 2025 to 15 MAY 2025

SE-4, 17 APR 2025 to 15 MAY 2025

ELEV 310		TDZE 308	
VGSI and RNAV glidepath not coincident (VGSI Angle 3.00/TCH 42).			
4 NM Holding Pattern 2000 ← 283° GP 3.00° TCH 53		2100 HIDBI *LNAV only.	
BAVCA 103° →		AGUME 2000 *880	
9.6 NM		3.5 NM	
0.6 NM		1.1 NM	
JILAP 1.7 NM to RWY 10 *1.1 NM to RWY 10		RWY 10	
CATEGORY	A	B	C
LPV DA		612-1	304 (400-1)
LNAV/ VNAV DA		726-1 1/4	418 (300-1 1/4)
LNAV MDA		680-1	372 (400-1)
CIRCLING	820-1	510 (600-1)	1080-2 1/4 770 (800-2 1/4)
			1160-2 3/4 850 (900-2 3/4)



MIRL Rwy 10-28
REIL Rwy 10 and 28