

WAAS CH 61104 W04A	APP CRS 037°	Rwy Idg TDZE Apt Elev	6801 744 755
--	------------------------	-----------------------------	---

RNAV (GPS) RWY 4

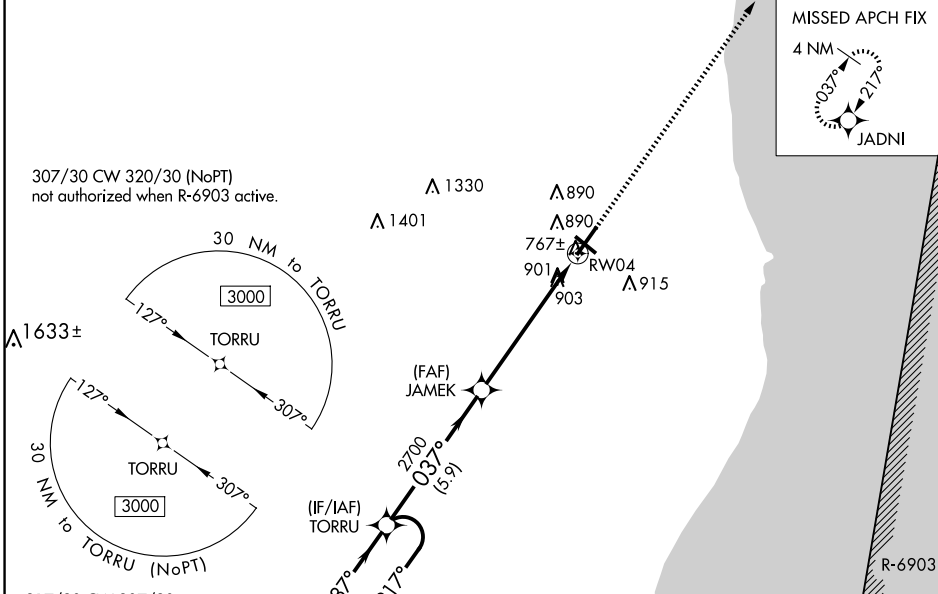
SHEBOYGAN COUNTY MEML INTL (SBM)

RNP APCH.

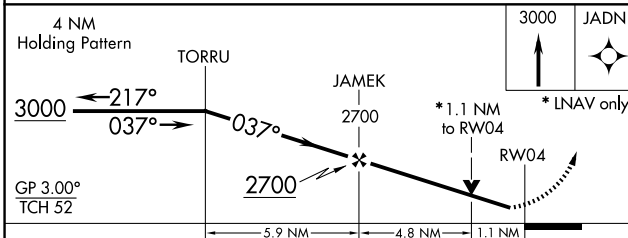
▼ For uncompensated Baro-VNAV systems, LNAV/VNAV NA below -23°C or above 54°C. Rwy 4 helicopter visibility reduction below ¾ SM NA.

MISSED APPROACH: Climb to 3000 direct JADNI and hold.

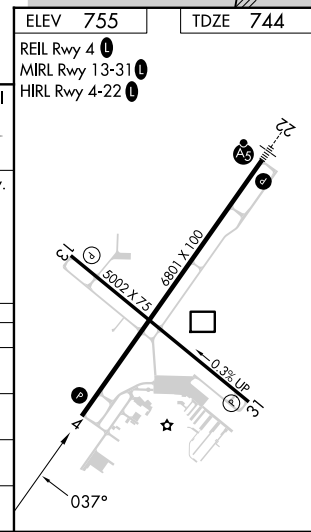
ASOS 118.425	MILWAUKEE APP CON 127.375 263.075	GCO 121.725	CLNC DEL 127.375	UNICOM 122.7 (CTAF) 0
------------------------	---	-----------------------	----------------------------	---------------------------------



ELEV 755	TDZE 744
REIL Rwy 4 0	MIRL Rwy 13-31 0
HIRL Rwy 4-22 0	



CATEGORY	A	B	C	D
LPV DA		994-1	250 (300-1)	
LNAV/VNAV DA		1193-1½	449 (500-1½)	
LNAV MDA	1160-1	416 (500-1)	1160-1½	416 (500-1½)
C CIRCLING	1200-1 445 (500-1)	1220-1 465 (500-1)	1240-1½ 485 (500-1½)	1360-2 605 (700-2)



EC-3, 17 APR 2025 to 15 MAY 2025

EC-3, 17 APR 2025 to 15 MAY 2025