

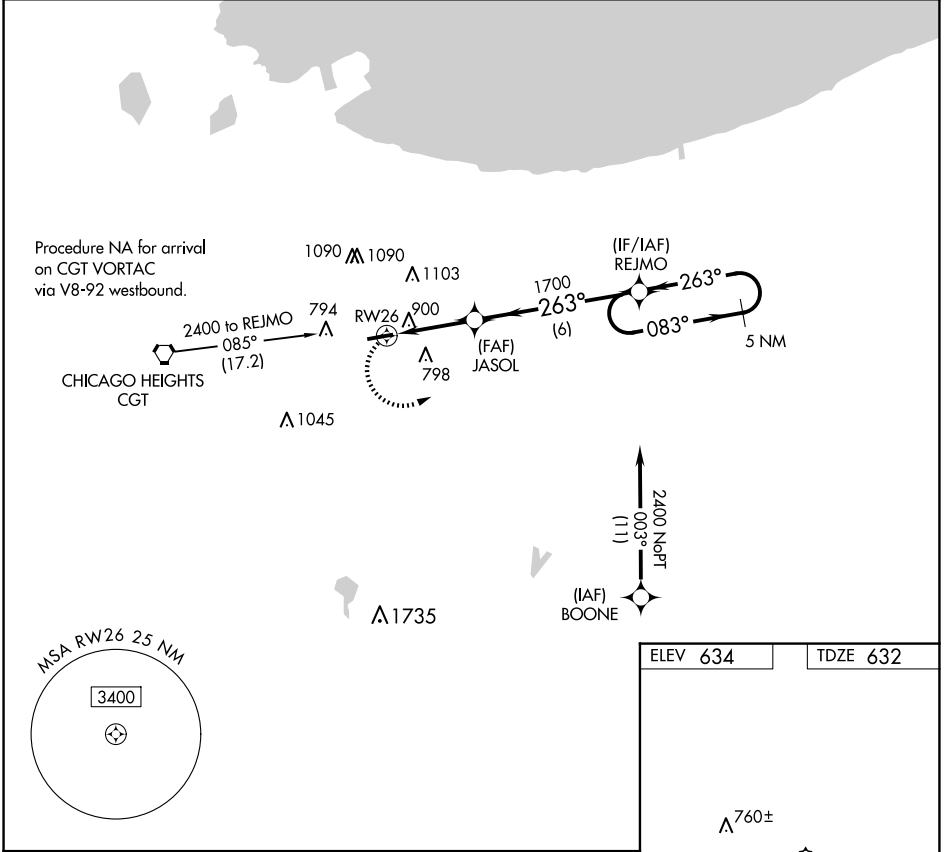
APP CRS	Rwy Idg	3779
263°	TDZE	632
	Apt Elev	634

RNAV (GPS) RWY 26

GRIFFITH-MERRILLVILLE (Ø5C)

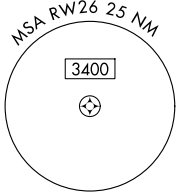
RNP APCH	Obtain local altimeter setting on CTAF; when not received use Chicago Midway Intl altimeter setting and increase all MDAs 60 feet. Visibility reduction by helicopters NA. Procedure NA at night.	MISSED APPROACH: Climbing left turn to 2400 direct REJMO and hold.
----------	---	--

CHICAGO APP CON 133.1 285.6	UNICOM 123.0 (CTAF) 1
---------------------------------------	---------------------------------

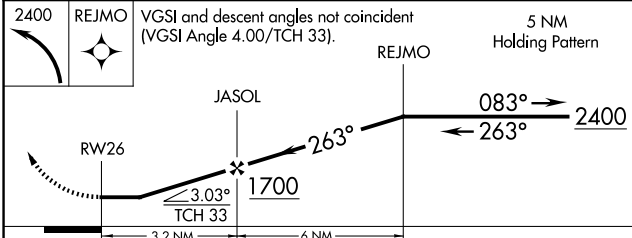


EC-2, 17 APR 2025 to 15 MAY 2025

EC-2, 17 APR 2025 to 15 MAY 2025



ELEV 634	TDZE 632
----------	----------



CATEGORY	A	B	C	D
LNAV MDA	1160-1	528 (600-1)		NA
<input checked="" type="checkbox"/> CIRCLING	1200-1	566 (600-1)		NA

REL Rwy 8 and 26 1
MIRL Rwy 8-26 1