

APP CRS	Rwy Idg	<b>4899</b>
<b>083°</b>	TDZE	<b>634</b>
	Apt Elev	<b>634</b>

# RNAV (GPS) RWY 8

GRIFFITH-MERRILLVILLE (Ø5C)

RNP APCH - GPS

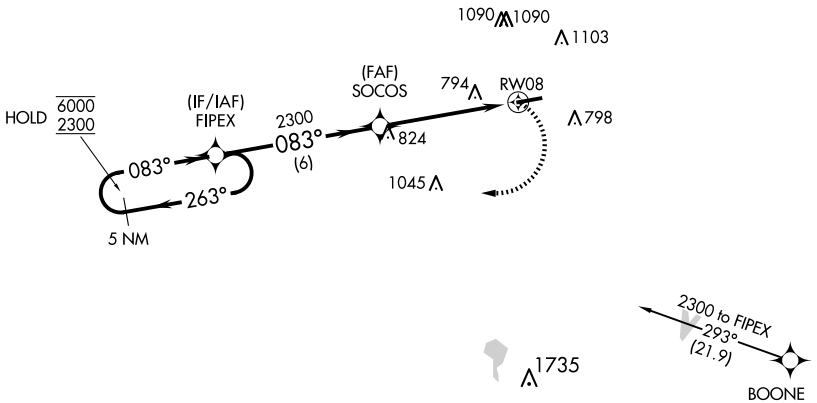
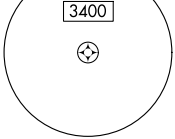
▼ Procedure NA at night. Obtain local altimeter setting on CTAF; when not received, use Chicago Midway Intl altimeter setting and increase all MDAs 60 feet. Rwy 8 helicopter visibility reduction below 1 SM NA.

MISSED APPROACH: Climbing right turn to 2300 direct FIPEX and hold.

CHICAGO APP CON  
**133.1 285.6**

UNICOM  
**123.0 (CTAF) 1**

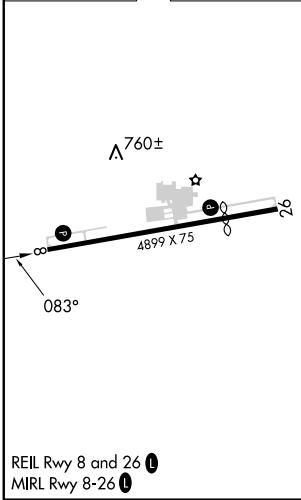
MSA RW08 25 NM



EC-2, 17 APR 2025 to 15 MAY 2025

EC-2, 17 APR 2025 to 15 MAY 2025

ELEV 634 TDZE 634



REIL Rwy 8 and 26 1  
MIRL Rwy 8-26 1

5 NM Holding Pattern		VGSi and descent angles not coincident (VGSi Angle 3.50/TCH 44).		2300	FIPEX
6000 ← 263°		2300		↙ ↘	
2300 → 083°		3.04° TCH 41		↘ ↙	
		6 NM		5 NM	
CATEGORY	A	B	C	D	
LNAY MDA	1080-1	446 (500-1)	NA		
<input checked="" type="checkbox"/> CIRCLING	1200-1	566 (600-1)	NA		