

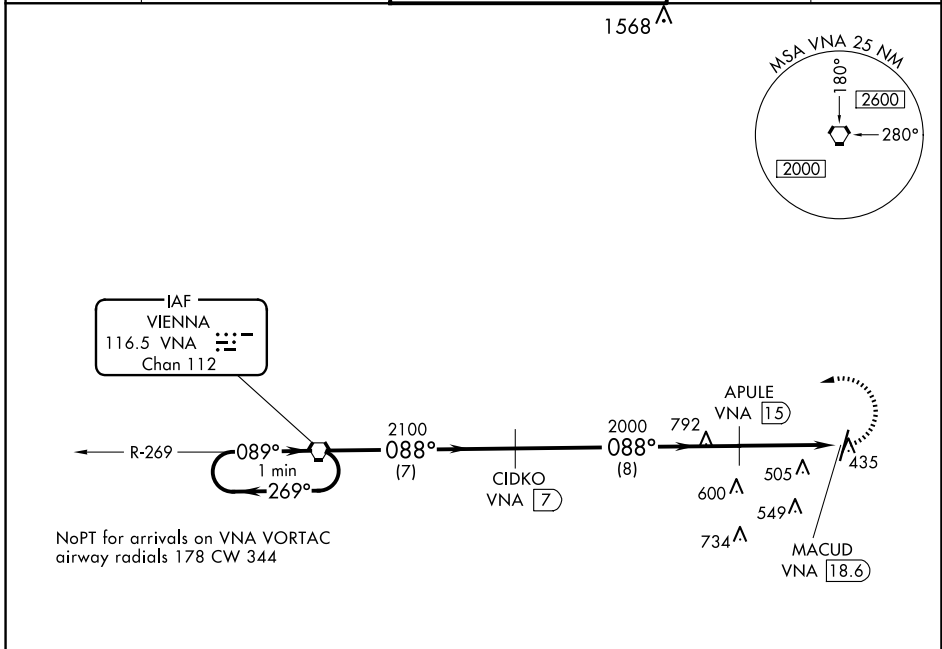
VORTAC VNA <b>116.5</b> Chan <b>112</b>	APP CRS <b>088°</b>	Rwy Idg TDZE Apt Elev <b>N/A</b> <b>N/A</b> <b>303</b>
---	------------------------	---

**VOR/DME-A**  
HEART OF GEORGIA RGNL (E2M)

▼ When local altimeter setting not received, use Dublin altimeter setting and increase all MDAs 60 feet, increase Circling Cat C visibility ¼ SM.

▲ NA MISSED APPROACH: Climbing left turn to 2100 direct VNA VORTAC and hold.

ATIS <b>119.425</b>	JACKSONVILLE CENTER <b>127.575 269.025</b>	HEART OF GEORGIA TOWER ★ <b>124.55 (CTAF) 0</b>	GND CON <b>121.175</b>	UNICOM <b>122.95</b>
------------------------	---	--	---------------------------	-------------------------



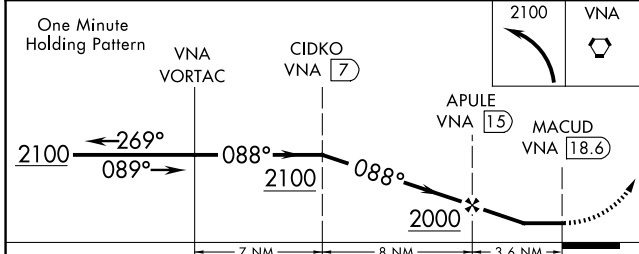
ELEV 303

088° 3.6 NM from FAF

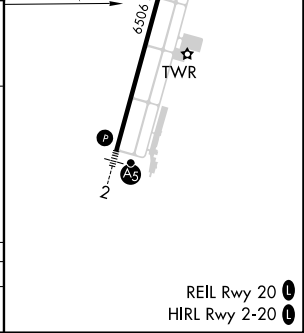
6504 x 100'

TWR

A5



CATEGORY	A	B	C	D
◻ CIRCLING	760-1 457 (500-1)	820-1 517 (600-1)	900-1½ 597 (600-1½)	900-2 597 (600-2)



SE-4, 17 APR 2025 to 15 MAY 2025

SE-4, 17 APR 2025 to 15 MAY 2025