

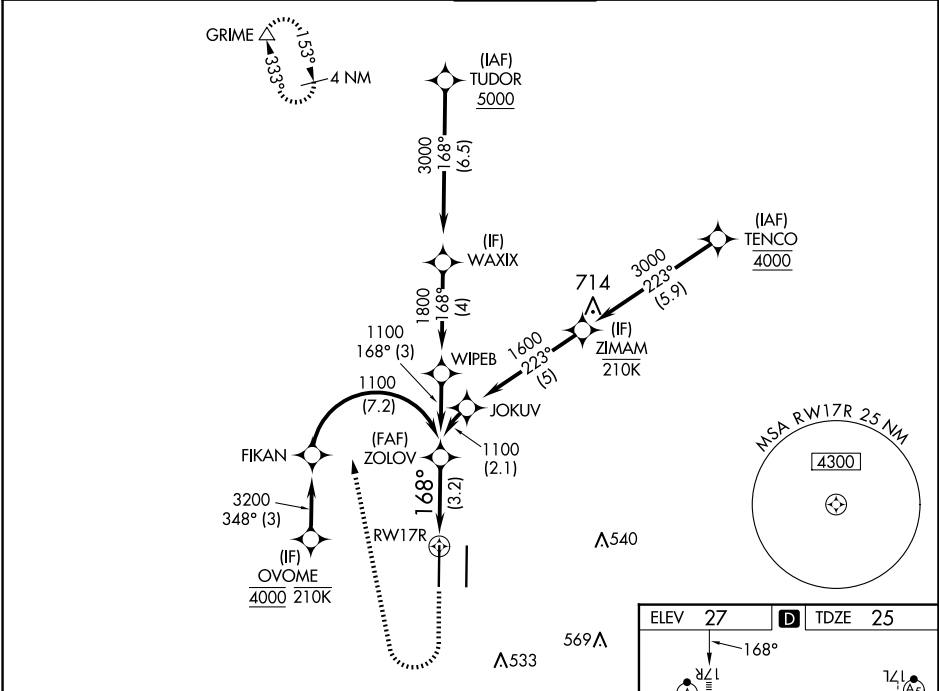
RNAV (RNP) Z RWY 17R

SACRAMENTO INTL (SMF)

APP CRS	Rwy Idg	8598
168°	TDZE	25
	Apt Elev	27

RNP AR APCH-GPS.		ALSF-2 	MISSED APPROACH: Climb to 500 then climbing right turn to 2000 direct GRIME and hold.
▼ For uncompensated Baro-VNAV systems, procedure NA below -2°C or above 54°C. For inop ALS, increase RNP 0.10 all Cats visibility to RVR 4000; increase RNP 0.18 all Cats visibility to RVR 4500 and RNP 0.30 all Cats visibility to RVR 5500.			

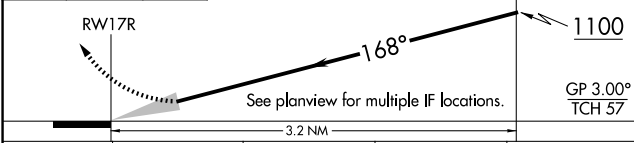
D-ATIS	NORCAL APP CON	CAPITOL TOWER	GND CON	CLNC DEL	CPDLC
126.75	125.4 259.1 (W-NE) 125.25 257.9 (SW) 127.4 317.5 (E-SE)	125.7 256.7	121.7 256.7	121.1 256.7	



SW-2, 17 APR 2025 to 15 MAY 2025

SW-2, 17 APR 2025 to 15 MAY 2025

500	2000	GRIME	VGSI and RNAV glidepath not coincident (VGSI Angle 3.00/TCH 72).



CATEGORY	A	B	C	D
RNP 0.10 DA		275/24	250 (300-½)	
RNP 0.18 DA		326/24	301 (300-½)	
RNP 0.30 DA		385/30	360 (400-¾)	

AUTHORIZATION REQUIRED

