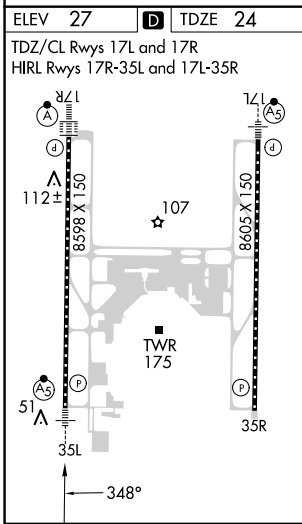
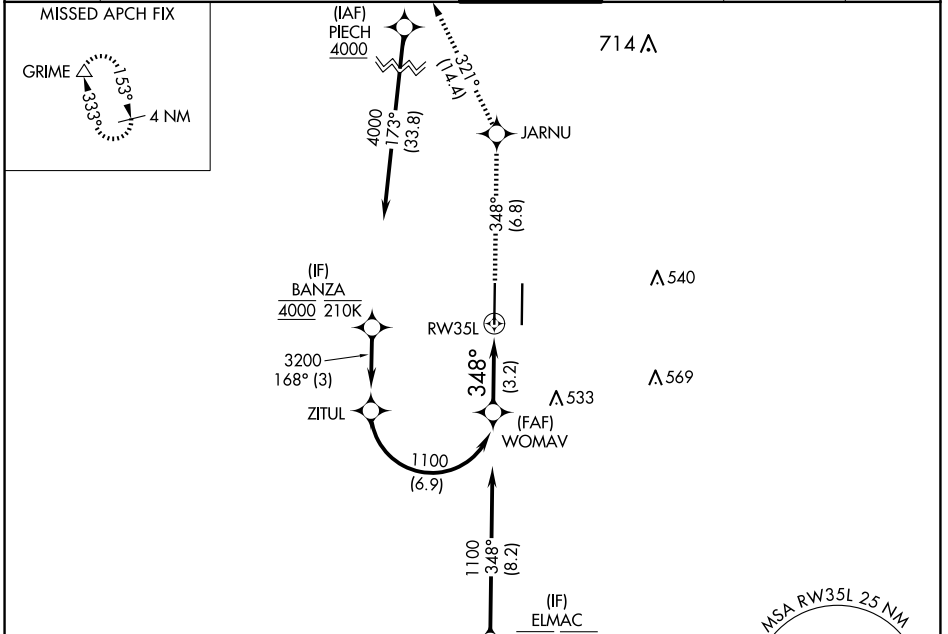


APP CRS	Rwy Idg	<b>8598</b>
<b>348°</b>	TDZE	<b>24</b>
	Apt Elev	<b>27</b>

# RNAV (RNP) Z RWY 35L

SACRAMENTO INTL (SMF)

RNP AR APCH-GPS.		MALSR	MISSED APPROACH: Climb to 2000 on track 348° to JARNU and track 321° to GRIME and hold.		
▼ For uncompensated Baro-VNAV systems, procedure NA below -2°C or above 54°C. For inop ALS, increase RNP 0.12 all Cats visibility to RVR 4500; increase RNP 0.30 all Cats visibility to RVR 5500.					
D-ATIS	NORCAL APP CON	CAPITOL TOWER	GND CON	CLNC DEL	CPDLC
<b>126.75</b>	<b>125.4 259.1</b> (W-NE) <b>125.25 257.9</b> (SW) <b>127.4 317.5</b> (E-SE)	<b>125.7 256.7</b>	<b>121.7 256.7</b>	<b>121.1 256.7</b>	



VGSI and RNAV glidepath not coincident (VGSI Angle 3.00/TCH 76).

WOMAV

1100

348°

2000

JARNU

GRIME

tr 348°

tr 321°

See planview for multiple IF locations.

1100

348°

RW35L

3.2 NM

GP 3.00°				
TCH 59				
CATEGORY	A	B	C	D
RNP 0.12 DA	318/24		294 (300-1/2)	
RNP 0.30 DA	382/30		358 (400-5/8)	

**AUTHORIZATION REQUIRED**

SW-2, 17 APR 2025 to 15 MAY 2025

SW-2, 17 APR 2025 to 15 MAY 2025