

APP CRS 348°	Rwy Idg TDZE Apt Elev	8605 24 27
------------------------	-----------------------------	---------------------------------------

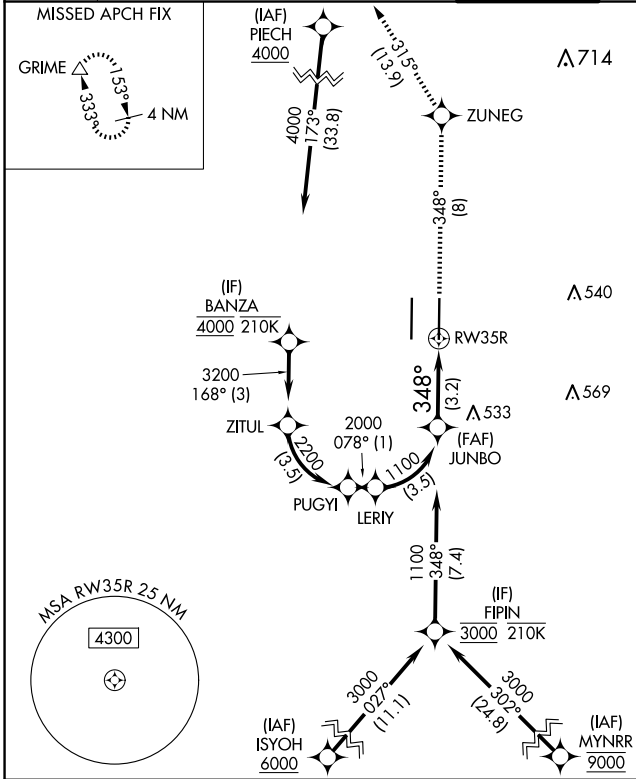
RNAV (RNP) Z RWY 35R

SACRAMENTO INTL (SMF)

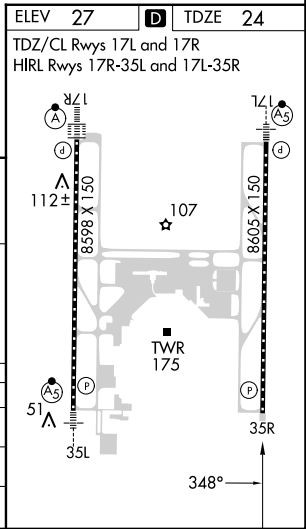
RNP AR APCH-GPS.
 ▼ For uncompensated Baro-VNAV systems, procedure NA below -2°C or above 54°C.

MISSED APPROACH: Climb to 2000 on track 348° to ZUNEG and on track 315° to GRIME and hold.

D-ATIS 126.75	NORCAL APP CON 125.4 259.1 (W-NE) 125.25 257.9 (SW) 127.4 317.5 (E-SE)	CAPITOL TOWER 125.7 256.7	GND CON 121.7 256.7	CLNC DEL 121.1 256.7	CPDLC
-------------------------	--	-------------------------------------	-------------------------------	--------------------------------	-------



JUNBO 1100	2000 tr 348°	ZUNEG	tr 315°	GRIME △
1100	348°	RW35R		
GP 3.00° TCH 64	See planview for multiple IF locations.			
3.2 NM				
CATEGORY	A	B	C	D
RNP 0.10 DA		316/45	292 (300-7/8)	
RNP 0.30 DA		384/55	360 (400-1)	
AUTHORIZATION REQUIRED				



SW-2, 17 APR 2025 to 15 MAY 2025

SW-2, 17 APR 2025 to 15 MAY 2025