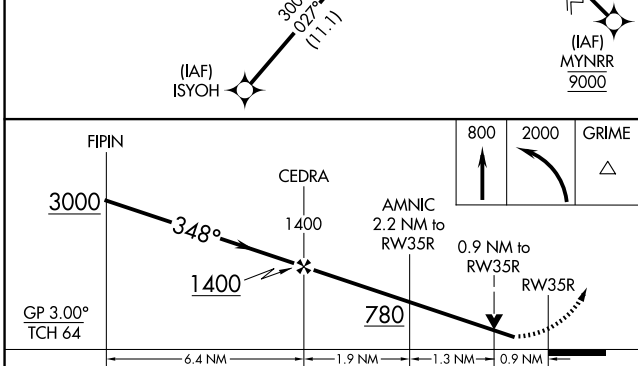
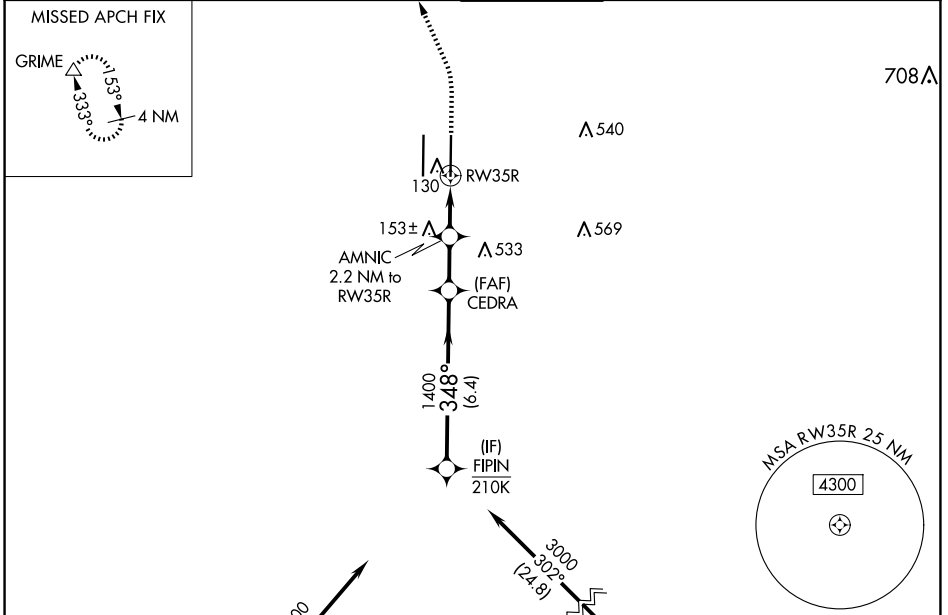


RNAV (GPS) Y RWY 35R

SACRAMENTO INTL (SMF)

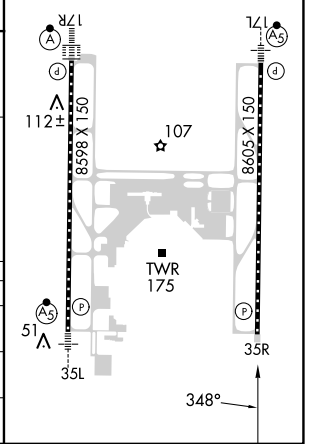
APP CRS	Rwy Idg	8605
348°	TDZE	24
	Apt Elev	27

RNP APCH-GPS.		MISSED APPROACH: Climb to 800 then climbing left turn to 2000 direct GRIME and hold.			
<p>▼ Circling NA west of Rwy 17L-35R. Rwy 35R helicopter visibility reduction below 3/4 SM NA. For uncompensated Baro-VNAV systems, LNAV/VNAV NA below -2°C or above 54°C.</p>		<p>▲ (IF) FIPIN 210K</p>			
D-ATIS	NORCAL APP CON	CAPITOL TOWER	GND CON	CLNC DEL	CPDLC
126.75	125.4 259.1 (W-NE) 125.25 257.9 (SW) 127.4 317.5 (E-SE)	125.7 256.7	121.7 256.7	121.1 256.7	



ELEV 27	D TDZE 24
---------	------------------

TDZ/CL Rwsy 17L and 17R
HIRL Rwsy 17R-35L and 17L-35R



CATEGORY	A	B	C	D
LNAV/VNAV DA		311/45	287 (300-7%)	
LNAV MDA		380/55	356 (400-1)	
C CIRCLING	400-1 373 (400-1)	480-1 453 (500-1)	480-1 1/2 453 (500-1 1/2)	840-2 3/4 813 (900-2 3/4)

SW-2, 17 APR 2025 to 15 MAY 2025

SW-2, 17 APR 2025 to 15 MAY 2025