

TUDOR TWO ARRIVAL

AL-5490 (FAA)

NORCAL APP CON
120.45 353.7
OAKLAND CENTER
132.2 350.3

KLAMATH FALLS
115.9 LMT
Chan 106

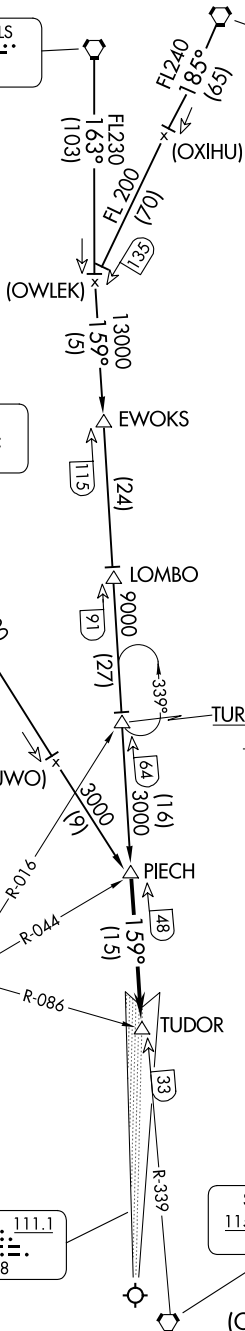
LAKEVIEW
112.0 LKV
Chan 57

RED BLUFF
115.7 RBL
Chan 104

WILLIAMS
114.4 IIA
Chan 91

LOCALIZER
111.1
I-SMF
Chan 48

SACRAMENTO
115.2 SAC
Chan 99



**BOWLS
TURBOJET VERTICAL NAVIGATION
PLANNING INFORMATION**
Expect 12000

NOTE: RADAR required.

NOTE: Expect RADAR vectors to final approach course.

NOTE: DME required.

NOTE: Chart not to scale.

(CONTINUED ON FOLLOWING PAGE)

SW-2, 17 APR 2025 to 15 MAY 2025

SW-2, 17 APR 2025 to 15 MAY 2025