

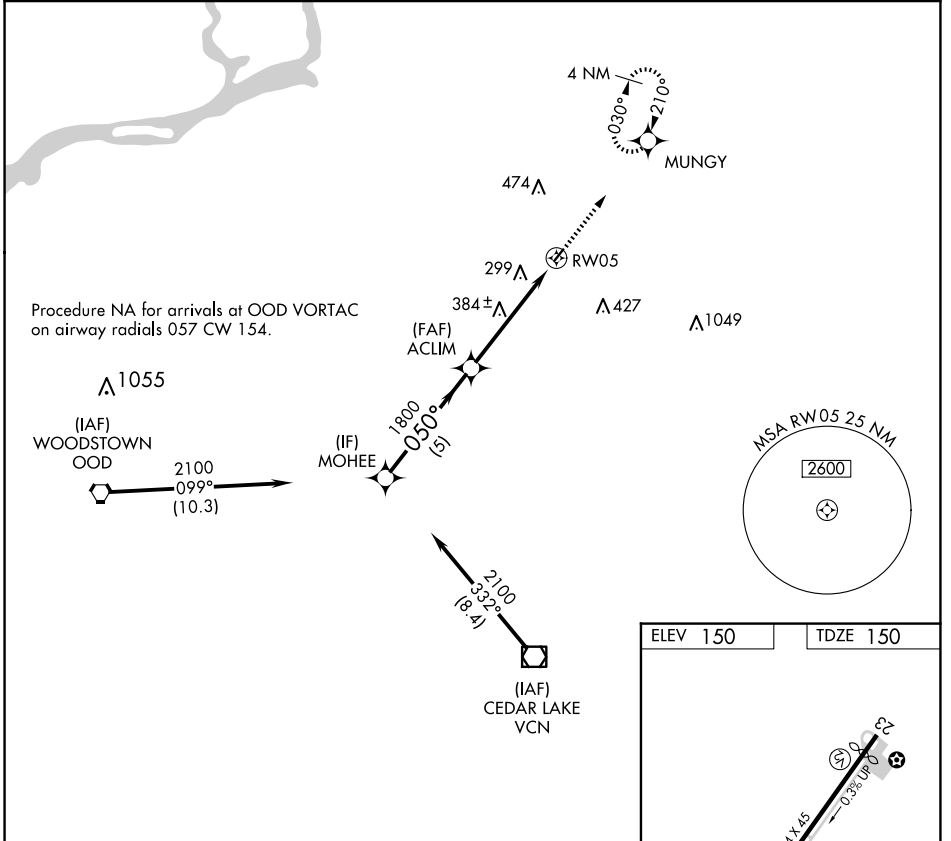
APP CRS	Rwy Idg	2354
050°	TDZE	150
	Apt Elev	150

RNAV (GPS) RWY 5

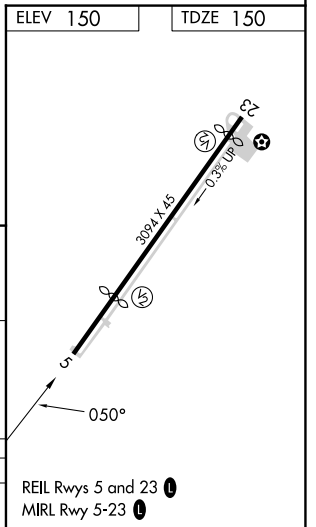
PINE VALLEY (19N)

RNP APCH.	MISSED APPROACH: Climb to 2000 direct MUNGY and hold.
<p>▼ Rwy 5 helicopter visibility reduction below 1 SM NA.</p> <p>▲ NA Procedure NA at night. Use Mount Holly altimeter setting; when not received use Philadelphia Intl altimeter setting and increase all MDA 20 feet.</p>	

MC GUIRE APP CON 126.475 363.8	UNICOM 123.0 (CTAF) 1
--	---------------------------------



MOHEE	Visual Segment - Obstacles.		2000	MUNGY
2100	050°	ACLIM	1800	RWY 5
5 NM		5 NM		
CATEGORY	A	B	C	D
LNAV MDA	740-1 590 (600-1)		NA	



NE-2, 17 APR 2025 to 15 MAY 2025

NE-2, 17 APR 2025 to 15 MAY 2025