

APP CRS	Rwy Idg	<b>4300</b>
<b>101°</b>	TDZE	<b>1909</b>
	Apt Elev	<b>1934</b>

# RNAV (GPS) RWY 10

ST MARYS MUNI (OYM)

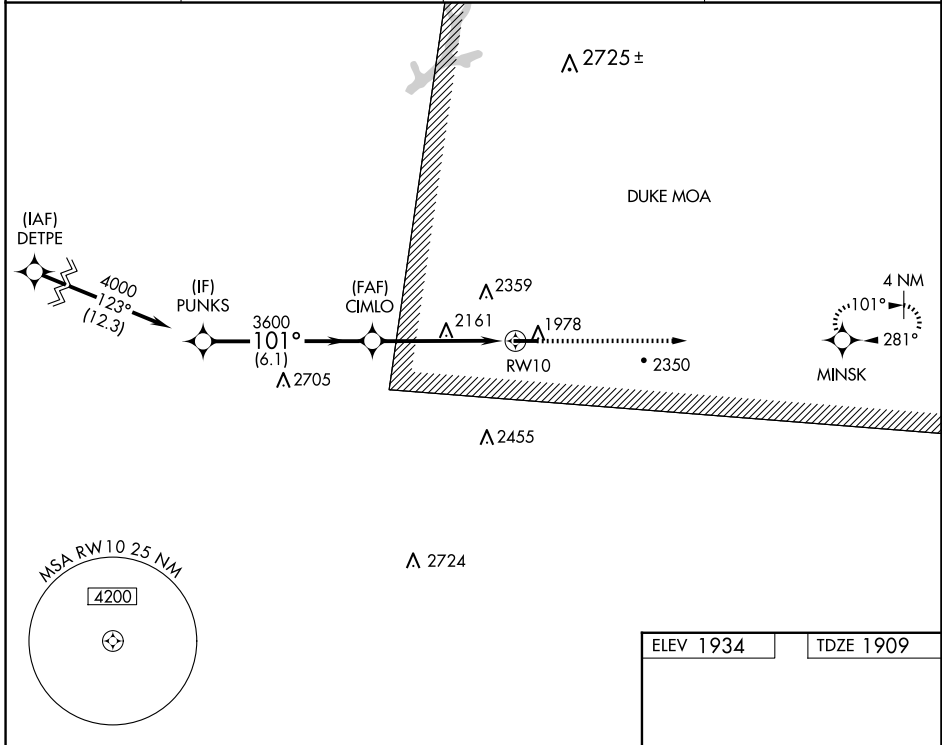
RNP APCH - GPS.

**⚠** Rwy 10 helicopter visibility reduction below 3/4 SM NA. VDP NA when using Bradford altimeter setting. When local altimeter setting not received, use Bradford altimeter setting and increase all MDA 240 feet, and LNAV visibility Cat A/B 1/4 SM, visibility Cat C/D 5/8 SM, and Circling visibility Cat A/B 1/2 SM, visibility Cat C 3/4 SM.

**❄** -36°C

MISSED APPROACH:  
Climb to 4000 direct  
MINSK and hold.

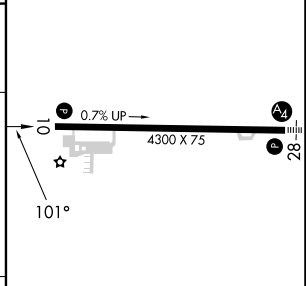
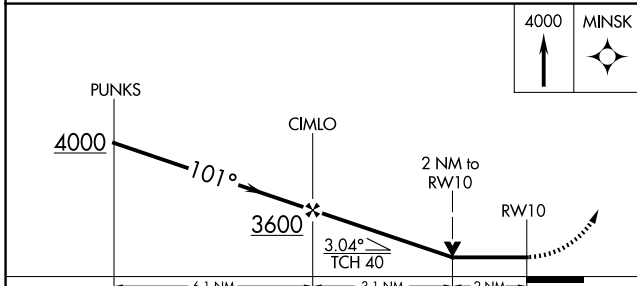
AWOS-3P <b>118.05</b>	CLEVELAND CENTER <b>126.725 291.65</b>	ALTOONA CLNC DEL <b>122.4</b>	UNICOM <b>122.7 (CTAF) 0</b>
--------------------------	---	----------------------------------	---------------------------------



NE-4, 17 APR 2025 to 15 MAY 2025

NE-4, 17 APR 2025 to 15 MAY 2025

ELEV 1934	TDZE 1909
-----------	-----------



CATEGORY	A	B	C	D
LNAV MDA	2580-1	671 (700-1)	2580-1 7/8	671 (700-1 7/8)
CIRCLING	2620-1 686 (700-1)	2660-1 726 (800-1)	2700-2 1/4 766 (800-2 1/4)	2840-3 906 (1000-3)

MIRL Rwy 10-28 0