

WESTMINSTER, MARYLAND

AL-5533 (FAA)

23222

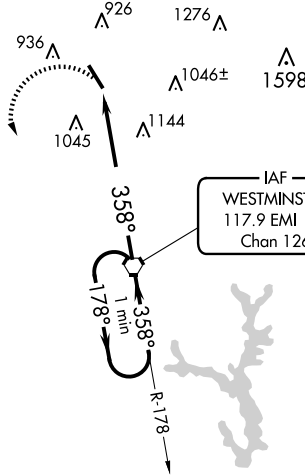
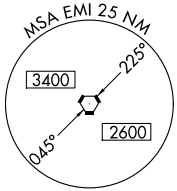
VORTAC EMI <b>117.9</b> Chan <b>126</b>	APP CRS <b>358°</b>	Rwy Idg TDZE Apt Elev	<b>5100</b> <b>788</b> <b>789</b>
---	------------------------	-----------------------------	---

# VOR RWY 34

CARROLL COUNTY RGNL/JACK B POAGE FLD (DMW)

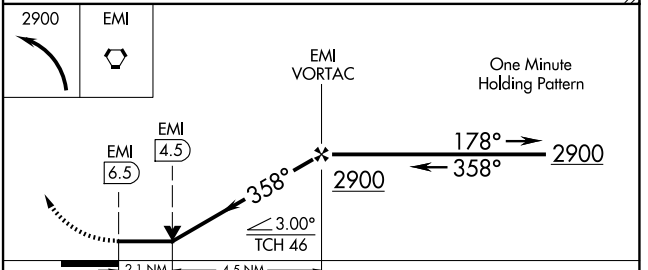
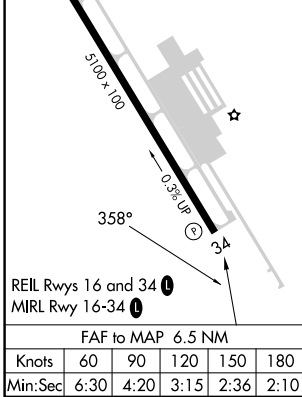
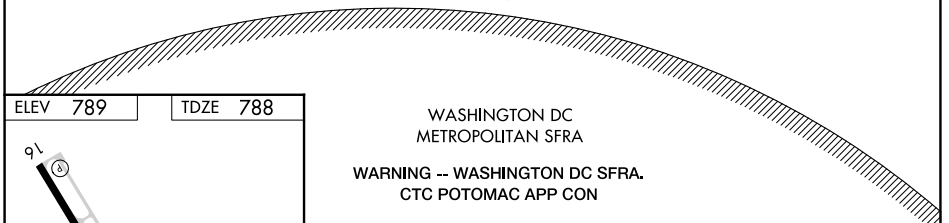
<b>▽</b> <b>▲ NA</b>	MISSED APPROACH: Climbing left turn to 2900 direct EMI VORTAC and hold.		
-------------------------	---	--	--

AWOS-3 <b>121.25</b>	POTOMAC APP CON <b>125.525 291.625</b>	GCO <b>121.725</b>	UNICOM <b>122.7 (CTAF) 0</b>
-------------------------	---	-----------------------	---------------------------------



NE-3, 17 APR 2025 to 15 MAY 2025

NE-3, 17 APR 2025 to 15 MAY 2025



CATEGORY	A	B	C	D
S-34	1480-1	692 (700-1)	1480-2 692 (700-2)	NA
CIRCLING	1480-1	691 (700-1)	1500-2 711 (800-2)	NA

WESTMINSTER, MARYLAND  
Amdt 4C 20MAY21

CARROLL COUNTY RGNL/JACK B POAGE FLD (DMW)  
39°36'N-77°00'W

# VOR RWY 34