

AL-5535 (FAA)

RNAV (GPS) RWY 21

GRAHAM MUNI (RPH)

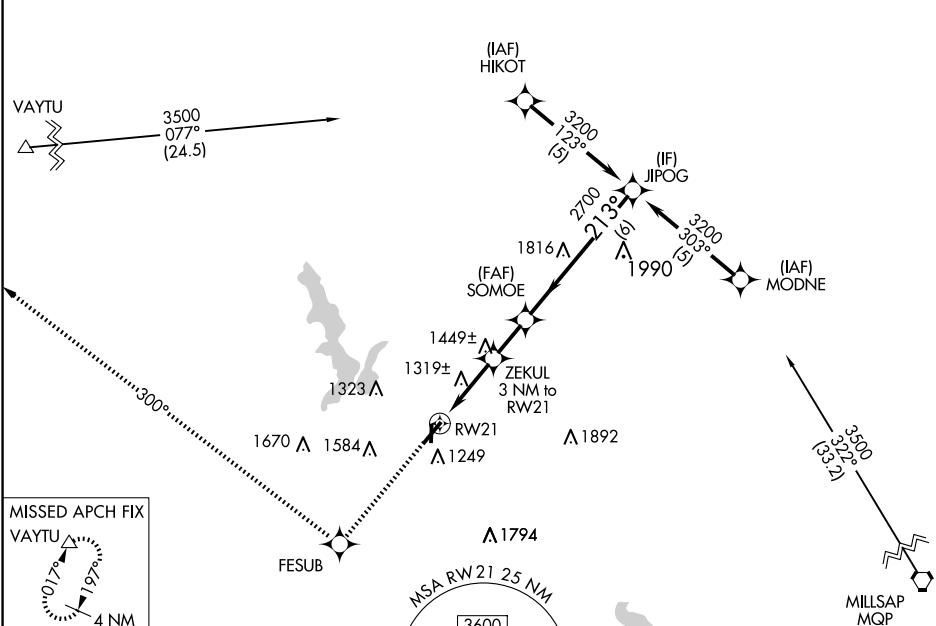
APP CRS	Rwy Idg	5000
213°	TDZE	1114
	Apt Elev	1123

RNP APCH.

▼ When local altimeter setting not received, use Mineral Wells altimeter setting and increase all
▲ MDAs 100 feet. Rwy 21 helicopter visibility reduction below 1 SM NA. Procedure NA at night.

MISSED APPROACH:
 Climb to 3900 direct
 FESUB and via 300°
 track to VAYTU and hold.

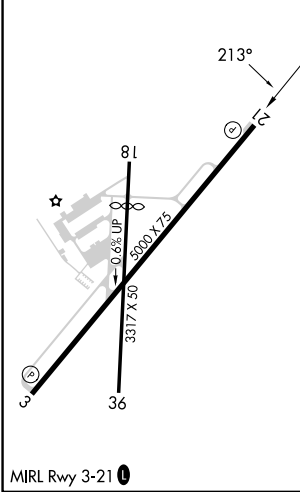
AWOS-3P 118.025	FORT WORTH CENTER 127.0 360.6	UNICOM 122.975 (CTAF)
---------------------------	---	---------------------------------



SC-2, 17 APR 2025 to 15 MAY 2025

SC-2, 17 APR 2025 to 15 MAY 2025

ELEV 1123	TDZE 1114
-----------	-----------



3900	FESUB	300° tr	VAYTU
Procedure NA for arrivals on MQP VORTAC via airway radials 265 CW 001.			
CATEGORY	A	B	C
LNAV MDA	1700-1	586 (600-1)	NA
CIRCLING	1700-1	577 (600-1)	NA