

VORTAC OOM	APP CRS	Rwy Idg	4501
110.2	159°	TDZE	721
Chan 39		Apt Elev	727

# VOR RWY 13

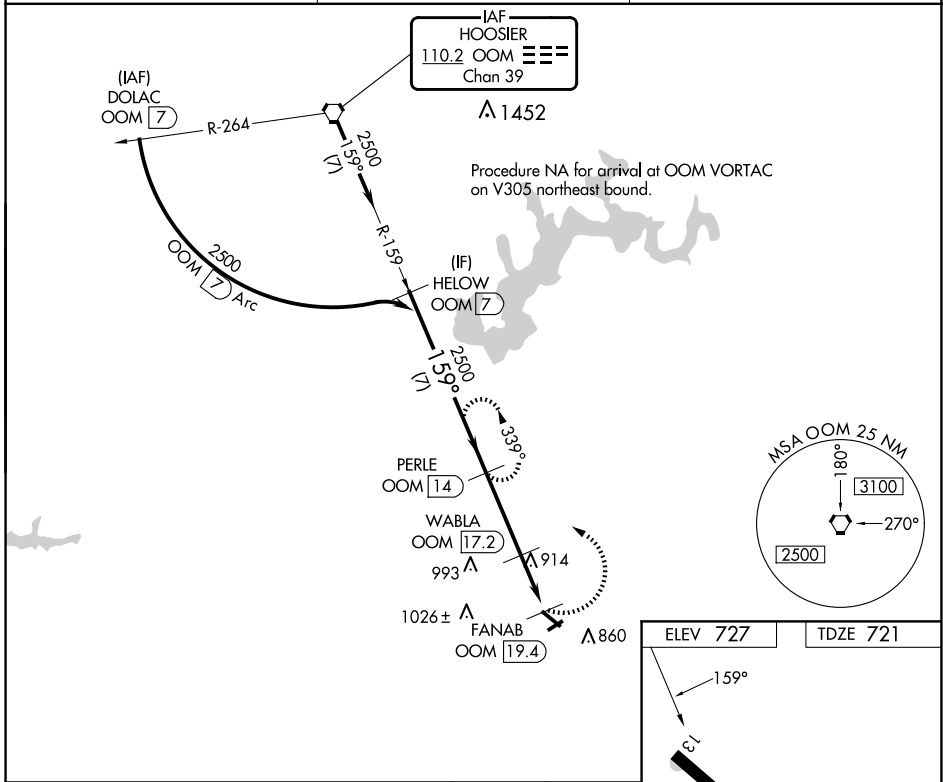
VIRGIL I GRISSOM MUNI (BFR)

DME required.

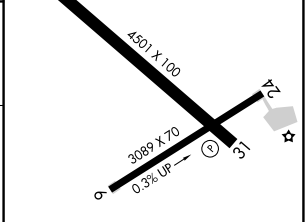
Procedure NA at night. Rwy 13 helicopter visibility reduction below 1 SM NA. When local altimeter setting not received, use Bloomington altimeter setting: increase all MDAs 80 feet and S-13 and Circling Cats C and D visibilities 1/4 SM.

MISSED APPROACH: Climbing left turn to 2500 on OOM VORTAC R-159 to PERLE/14 DME and hold, continue climb-in-hold to 2500.

AWOS-3PT 119.125	LOUISVILLE APP CON 132.075 327.0	UNICOM 122.8 (CTAF) 0
---------------------	-------------------------------------	--------------------------



	HELOW OOM (7)	PERLE OOM (14)	WABLA OOM (17.2)	FANAB OOM (19.4)
	2500	2500	1380	
	7 NM	3.2 NM	2.2 NM	
CATEGORY	A	B	C	D
S-13	1300-1	579 (600-1)	1300-1½	579 (600-1½)
CIRCLING	1300-1	573 (600-1)	1380-1¾ 653 (700-1¾)	1380-2 653 (700-2)



EC-2, 17 APR 2025 to 15 MAY 2025

EC-2, 17 APR 2025 to 15 MAY 2025

MIRL Rwy 6-24 and 13-31 0  
REL Rwy 13 and 31 0